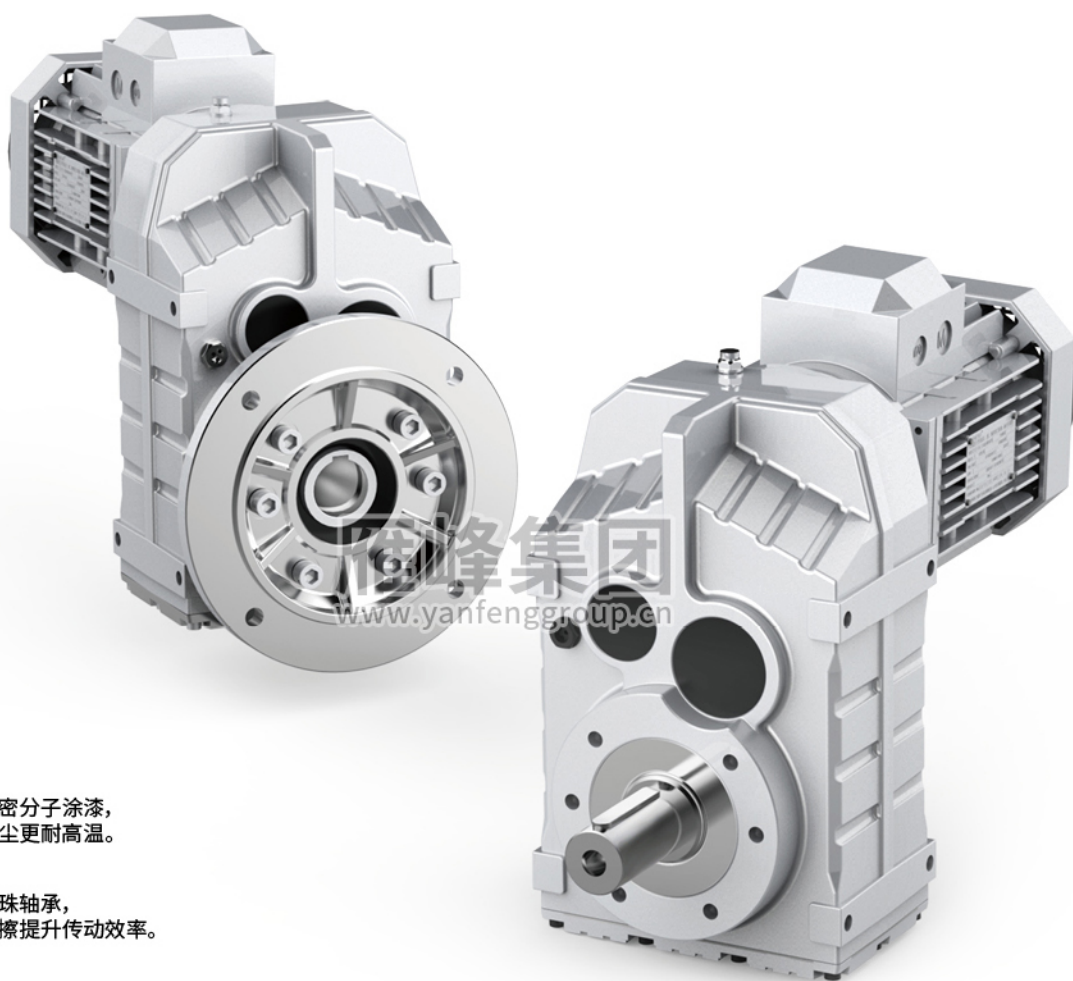


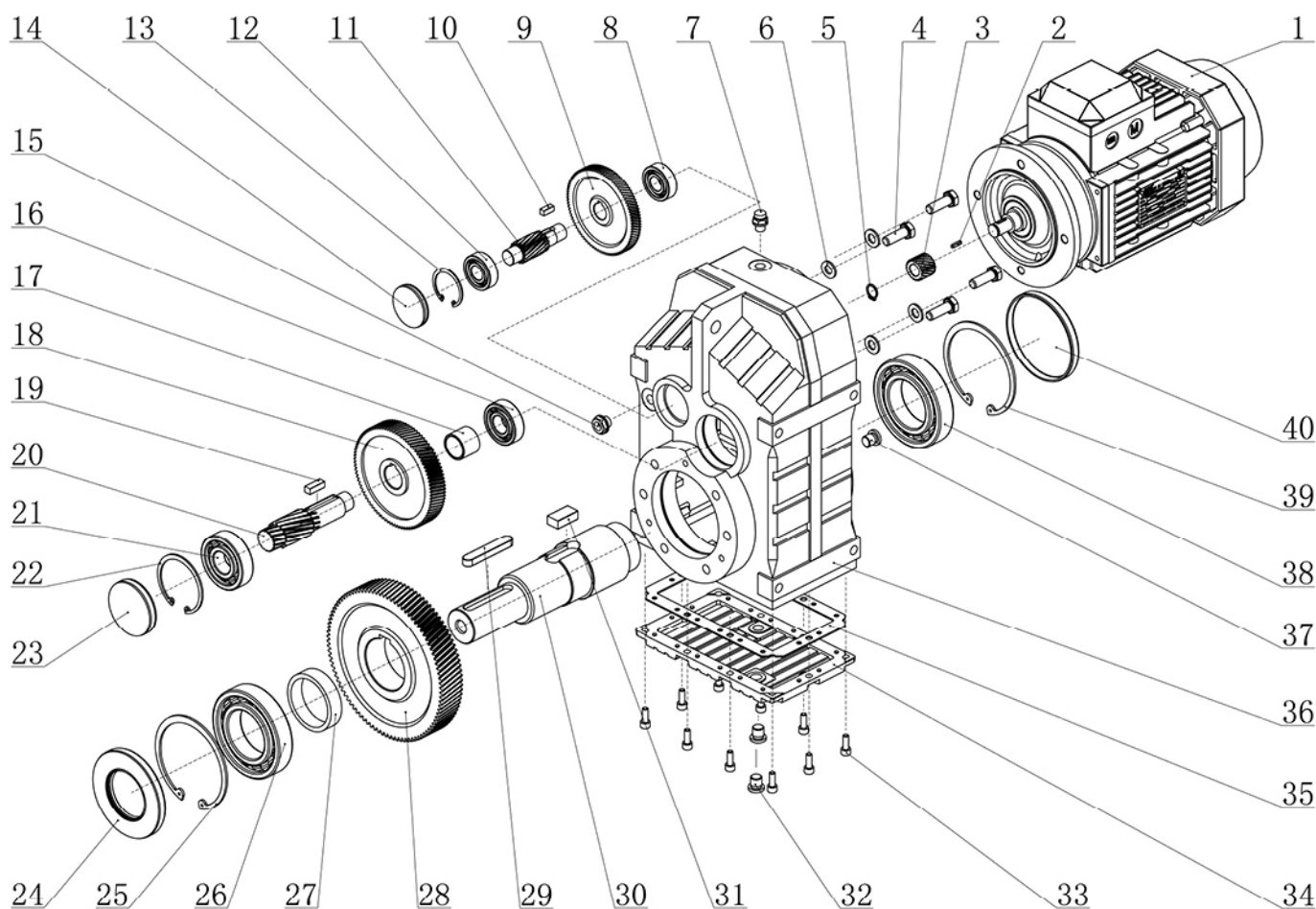
YFF SERIES

070



- ★ 三层高分子涂漆，
隔绝灰尘更耐高温。
- ★ 高端滚珠轴承，
减少摩擦提升传动效率。
- ★ 优质合金钢精密磨齿，
提高啮合精度保证品质。

CHINA•YANFENG
GROUP CO.,LTD.

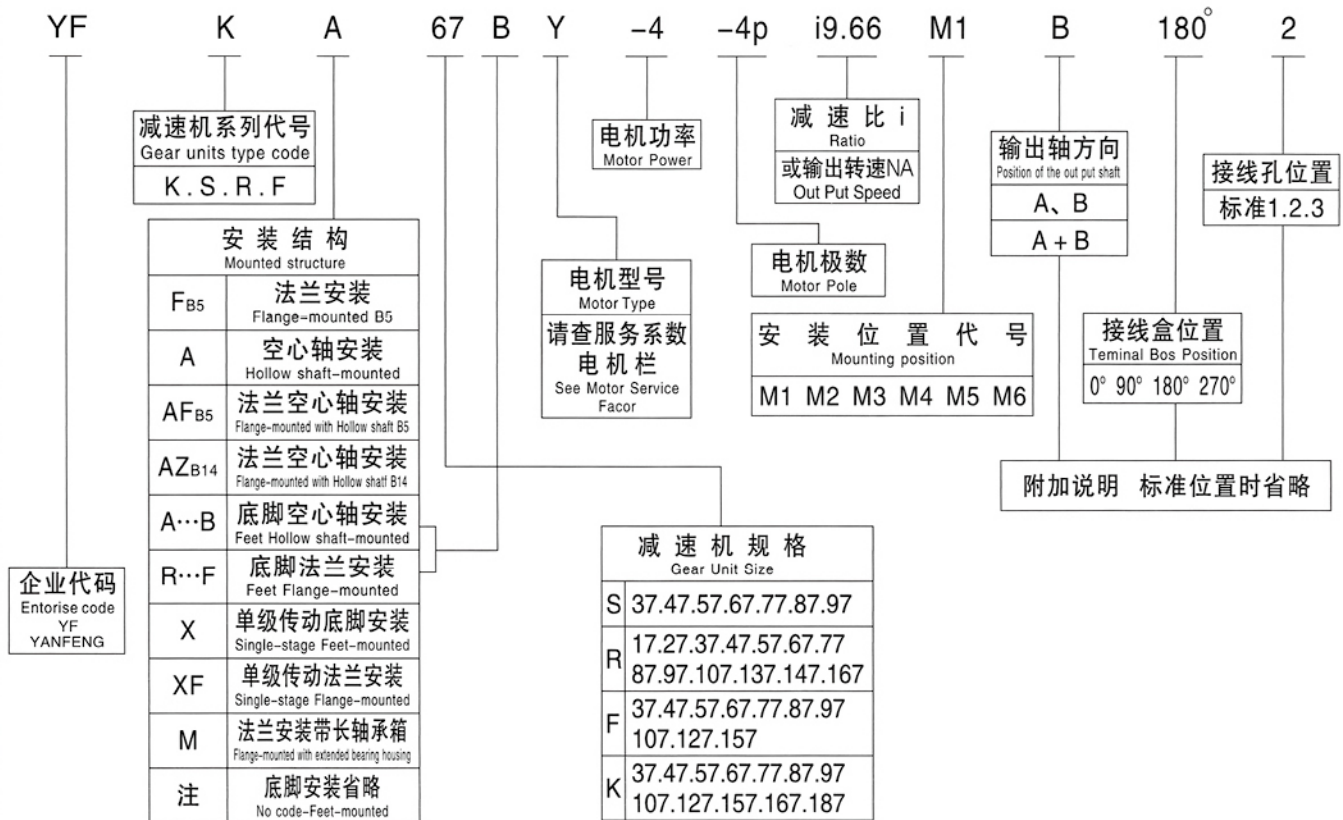


F系列爆炸图

1.电机	11.齿轴	21.轴承	31.平键
2.平键	12.轴承	22.孔用挡圈	32.螺塞
3.齿轮	13.孔用挡圈	23.平面油封	33.螺钉
4.螺栓	14.平面油封	24.骨架油封	34.箱盖
5.轴用挡圈	15.油镜	25.孔用挡圈	35.密封垫
6.平垫圈	16.轴承	26.轴承	36.箱体
7.通气帽	17.轴套	27.轴套	37.螺塞
8.轴承	18.齿轮	28.齿轮	38.轴承
9.齿轮	19.平键	29.平键	39.孔用挡圈
10.平键	20.齿轴	30.输出轴	40.平面油封

YFR.YFF.YFK.YFS

型号与标记: Type Designations:



选型方法

Type selection method

减速机是按载荷平稳，每天工作时间一定和少量起停次数的情况设计的，而在实际使用中往往不是处于此种理想状况，因此必须按照实际情况的载荷类型、运行时间、起动频率来确定工作机系数 f_1 、原动机系数 f_2 、起动系数 f_3 。使用小于或等于选型表中的服务系数 f_B ，即 $f_1 \times f_2 \times f_3 \leq f_B$ 。或将工作机所需的转矩乘以服务系数 ($f_1 \times f_2 \times f_3$) 应小于或等于减速机的许用转矩。

即 $T_N \geq T_2 \times f_1 \times f_2 \times f_3$

- f_1 — 工作机系数 (见表1)
- f_2 — 原动机系数 (见表2)
- f_3 — 起动系数 (见表3)
- T_2 — 工作机所需转矩
- T_N — 减速机许用转矩 (见表13)

YFK系列和YFT系列螺旋锥齿减速机如果只承受单向载荷则最好注明旋转方向 (从输出端方向看)，这样有利于改善螺旋锥齿轮的受力状况。

我公司可承接特殊规格产品的订货，并可为客户提供专用设计服务。

本样本中如有改进之处，不另作通知，请谅解。

Gear units are designed under the circumstance of steady load, stated operating time per day and a few starting times. but the practical condition will be not as perfect as the designed circumstance. so we must confirm driven machine factor f_1 , prime mover factor f_2 , starting factor f_3 according to actual load type, operating time, starting frequency. Let it less than or equal to the service factor f_B of selection table, viz $f_1 \times f_2 \times f_3 \leq f_B$. the needed torque of service machine multiply the service factor ($f_1 \times f_2 \times f_3$) should less than or equal to gear units, permissible torque.

Viz $T_N \geq T_2 \times f_1 \times f_2 \times f_3$

- f_1 — driven machine factor (see table 1)
- f_2 — prime mover factor (see table 2)
- f_3 — starting factor (see table 3)
- T_2 — the needed torque of driven machine
- T_N — gear units, permissible torque (see table 13)

If the K series and T series spiral bevel gear units can only bear single direction load, please indicate the rotating direction (see from output side), which is good for improving the pressing state of the spiral bevel gear.

We accept the orders of products of special specification, and provide our customer with exclusive design service.

Design and specifications are subject to change without notice, Please forgive

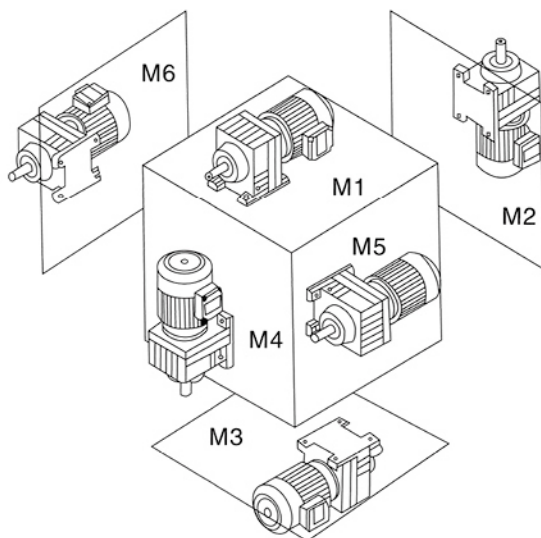
输入功率及许用转矩
Input power rating and retransmissible torque

表13 Table13

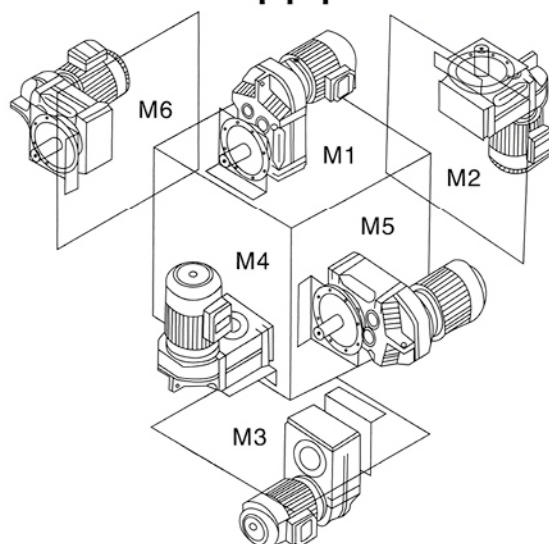
机 型 T Y P E		Y F R										Y F R F															
规格 SIZE		17	27	37	47	57	67	77	87	97	107	137	147	167	17	27	37	47	57	67	77	87	97	107	137	147	167
输入功率 INPUT POWER RATING(KW)	0.12-0.75	0.12-3	0.12-3	0.12-3	0.12-5.5	0.12-7.5	0.12-7.5	0.18-11	0.55-22	0.55-30	2.2-45	5.5-55	11-90	11-160	0.12-3	0.12-3	0.12-3	0.12-5.5	0.12-7.5	0.12-7.5	0.18-11	0.55-22	0.55-30	2.2-45	5.5-55	11-90	11-160
转动比 RATIO	383-8164	3.37-135.09	3.83-134.8	3.83-176.88	4.39-186.89	4.29-199.81	5.31-195.24	5.3-246.54	4.5-289.74	5.04-251.17	5.15-223.6	5-163.31	5-229.71		3.37-135.09	3.83-134.8	3.83-176.88	4.39-186.89	4.29-199.81	5.31-195.24	5.3-246.54	4.5-289.74	5.04-251.17	5.15-223.6	5-163.31	5-229.71	
许用转矩 PERMISSIBLE TORQUE(N·M)	87	128	196	305	440	595	705	1310	2110	4380	7910	12700	17700		128	196	305	440	595	705	1310	2110	4380	7910	12700	17700	
机 型 T Y P E		Y F R X										Y F R X F															
规格 SIZE	37	57	67	77	87	97	107								57	67	77	87	97	107							
输入功率 INPUT POWER RATING(KW)	0.12-1.1	0.12-5.5	0.12-7.5	1.1-11	3-22	5.5-30	5.5-45								0.12-5.5	0.12-7.5	1.1-11	3-22	5.5-30	5.5-45							
转动比 RATIO	1.62-4.43	1.3-5.5	1.4-6.07	1.42-5.63	1.39-6.45	1.42-5.79	1.44-6.63								1.3-5.5	1.4-6.07	1.42-5.63	1.39-6.45	1.42-5.79	1.44-6.63							
许用转矩 PERMISSIBLE TORQUE(N·M)	20	71	120	215	395	600	810								71	120	215	395	600	810							
机 型 T Y P E		Y F F										Y F F F															
规格 SIZE	37	47	57	67	77	87	97	107	127	157					47	57	67	77	87	97	107	127	157				
输入功率 INPUT POWER RATING(KW)	0.12-3	0.12-3	0.12-5.5	0.18-5.5	0.37-11	0.75-22	1.1-30	2.2-45	7.5-90	11-200					0.12-3	0.12-5.5	0.37-11	0.75-22	1.1-30	2.2-45	7.5-90	11-200					
转动比 RATIO	3.77-128.51	8.96-190.76	2.18-199.7	3.97-228.99	4.28-281.71	4.12-270.68	4.57-276.77	6.22-254.4	4.68-170.83	11.92-257.43					8.96-190.76	2.18-199.7	3.97-228.99	4.28-281.71	4.12-270.68	4.57-276.77	6.22-254.4	4.68-170.83	11.92-257.43				
许用转矩 PERMISSIBLE TORQUE(N·M)	196	405	605	810	1490	2940	4310	7840	11000	16800					405	605	810	1490	2940	4310	7840	11000	16800				
机 型 T Y P E		Y F K										Y F K A F															
规格 SIZE	37	47	57	67	77	87	97	107	127	157	167	187			47	57	67	77	87	97	107	127	157	167	187		
输入功率 INPUT POWER RATING(KW)	0.18-3	0.18-3	0.18-5.5	0.18-5.5	0.55-11	0.75-22	1.1-30	3-45	7.5-90	11-200	11-200	18.5-200			0.18-3	0.18-5.5	0.18-5.5	0.55-11	0.75-22	1.1-30	3-45	7.5-90	11-200	11-200	18.5-200		
转动比 RATIO	5.36-106.38	5.81-131.87	6.57-145.3	7.28-144.79	7.24-192.18	7.21-197.37	8.71-176.05	8.69-143.47	8.68-146.07	12.65-146.07	17.34-164.5	17.18-179.86			5.81-131.87	6.57-145.3	7.28-144.79	7.24-192.18	7.21-197.37	8.71-176.05	8.69-143.47	8.68-146.07	12.65-146.07	17.34-164.5	17.18-179.86		
许用转矩 PERMISSIBLE TORQUE(N·M)	156	400	600	785	1510	2760	4300	7210	13000	17800	31500	49400			400	600	785	1510	2760	4300	7210	13000	17800	31500	49400		
机 型 T Y P E		Y F S										Y F S A F															
规格 SIZE	37	47	57	67	77	87	97								47	57	67	77	87	97							
输入功率 INPUT POWER RATING(KW)	0.12-1.1	0.12-1.5	0.18-3	0.25-5.5	0.75-7.5	0.75-15	1.5-22								0.12-1.5	0.18-3	0.25-5.5	0.75-7.5	0.75-15	1.5-22							
转动比 RATIO	6.8-157.43	7.28-201	7.28-201	7.56-217.41	8.06-256.47	7.88-288	8.26-286.4								7.28-201	7.28-201	7.56-217.41	8.06-256.47	7.88-288	8.26-286.4							
许用转矩 PERMISSIBLE TORQUE(N·M)	93	170	245	520	1170	2130	3990								170	245	520	1170	2130	3990							

YFR、YFF、YFK、YFS系列

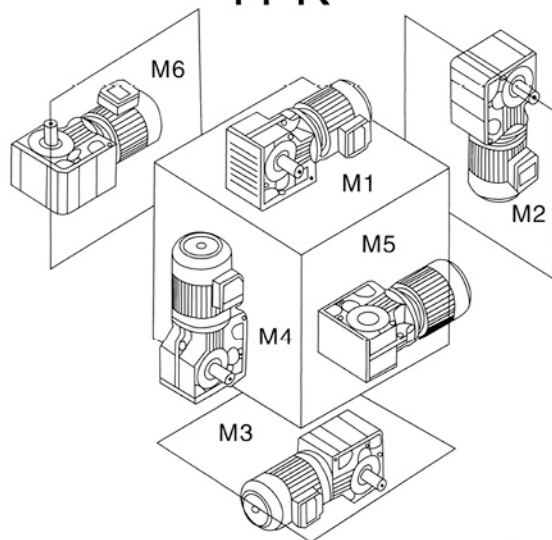
YFR



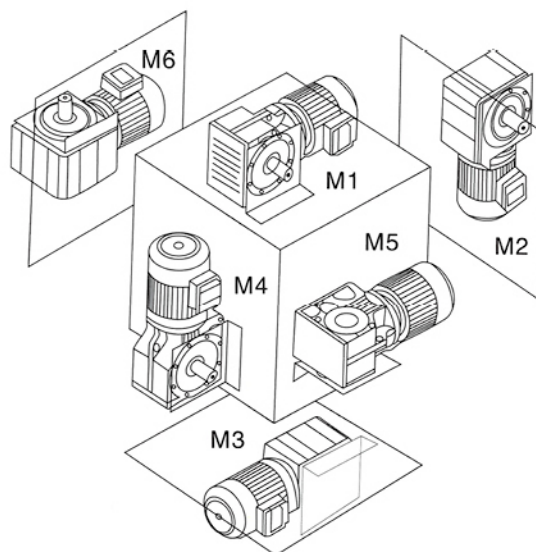
YFF



YFK



YFS



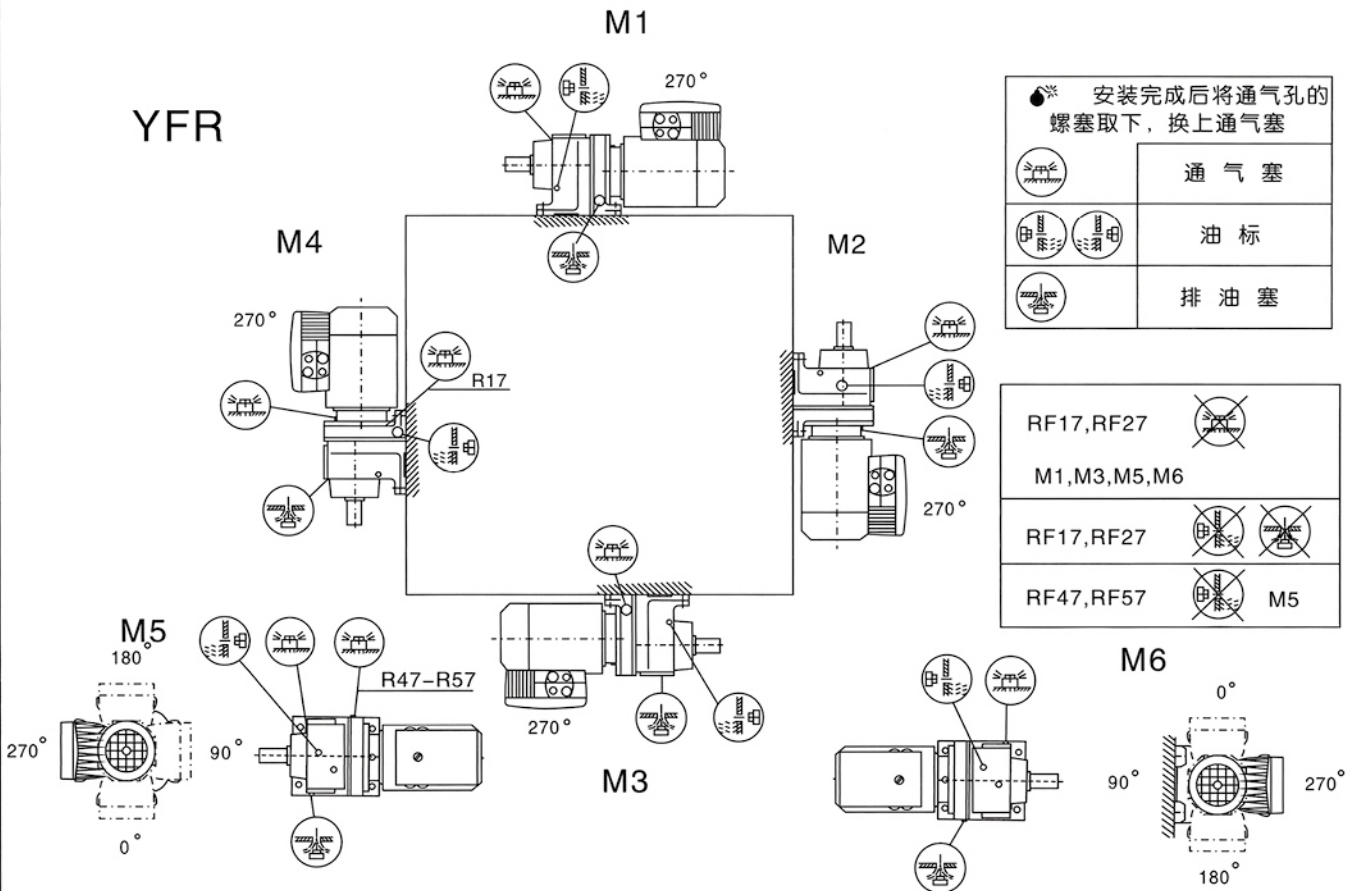
安装位置图例新旧对照

表14 Table14

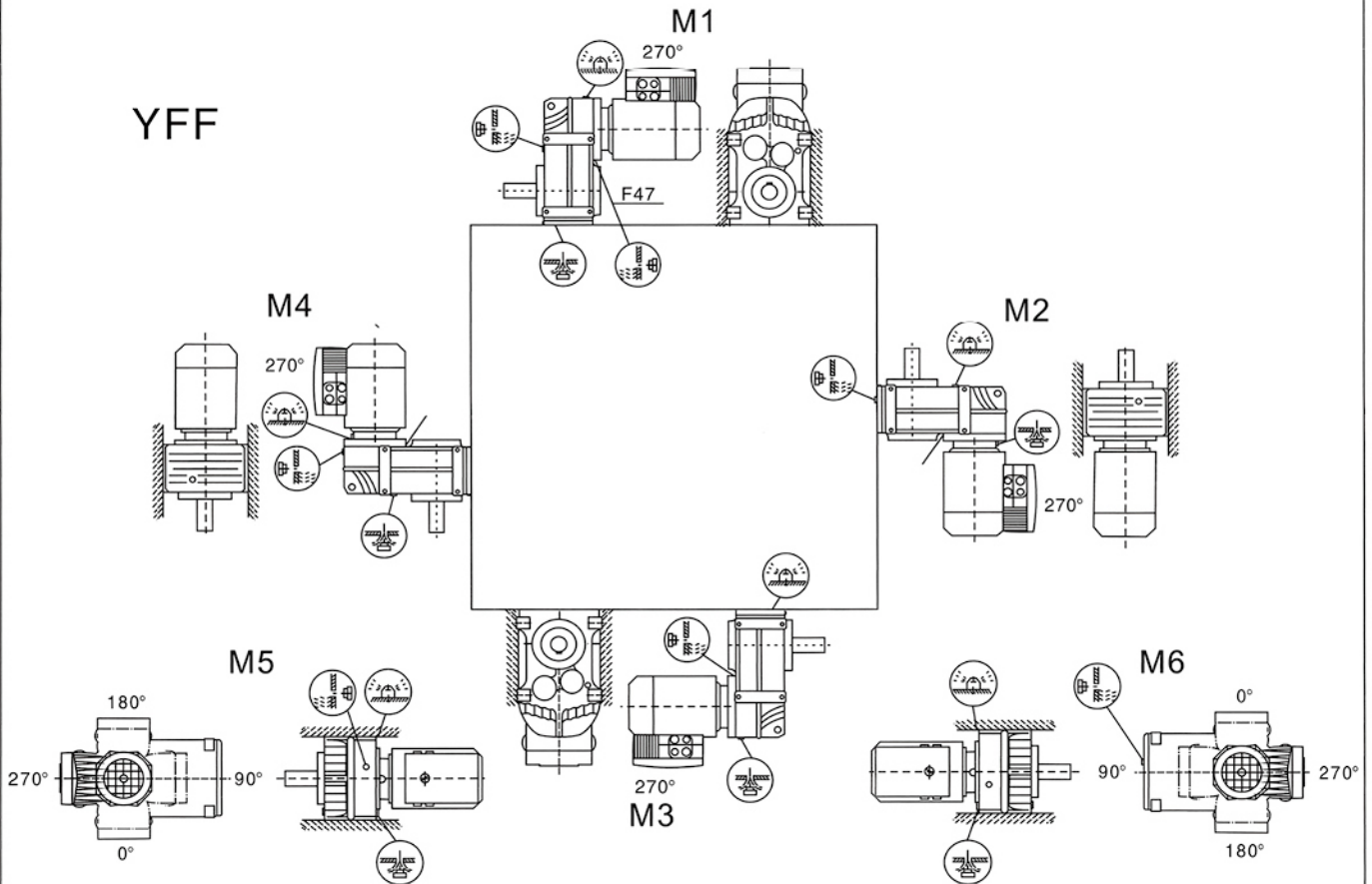
Old and new installation position position legend constrast

新编号 New NO 旧编号 Old NO	M1	M2	M3	M4	M5	M6
R	B3	V6	B8	V5	B6	B7
R..F	B35	V36	B85	V15	B65	B75
RF	B5	V3	B5II	V1	B51	B511
RX	B3	V6	B8	V5	B6	B7
RXF	B5	V3	B5II	V1	B51	B5111
F FA..B	B6	V6	B6II	V5	B3 B8	B31 B81
FF	B5	V3	B5II	V1	B51	B5111
FA FAF FAZ	H1	H6	H2	H5	H4	H3
K KA..B	B3 B61	B6 B81	B8	B31 B61	V5 V51	V6 V61
KF	B51 B3/B51	B5 B65	B5111 B8/B5111	B511 B6/B511	V1	V11 V6/V11
KA KAF KAZ	H1	H4	H2	H3	H5	H6
S	B3 B61 B811(仅用于S37)	B6 B81	B8 B311	B31 B611	V5 V51	V6 V61 V511(仅用于S37)
SF	B51	B5	B5111	B511	V1	V11
SA SAF SAZ	H1	H4	H2	H3	H5	H6

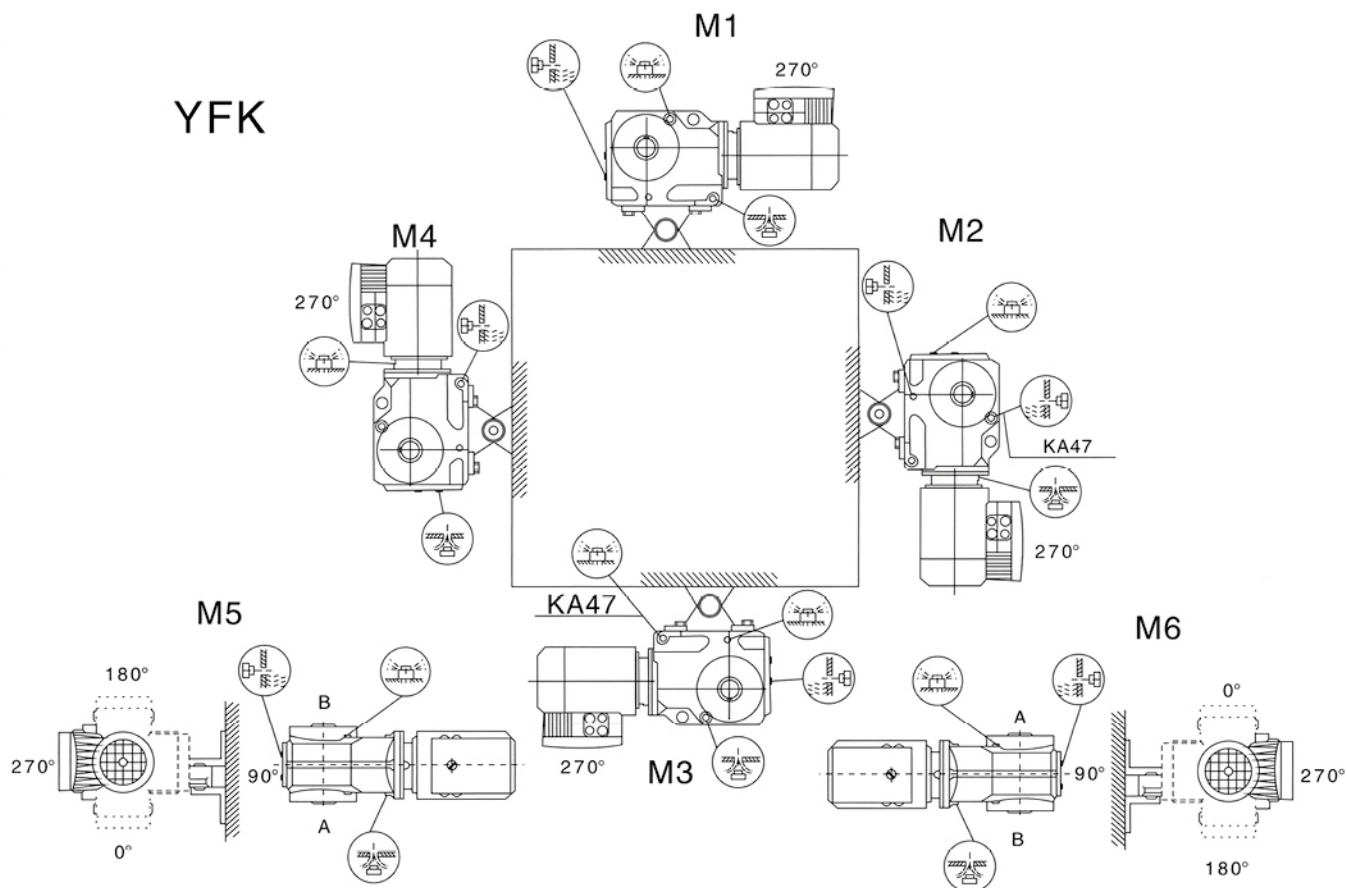
YFR



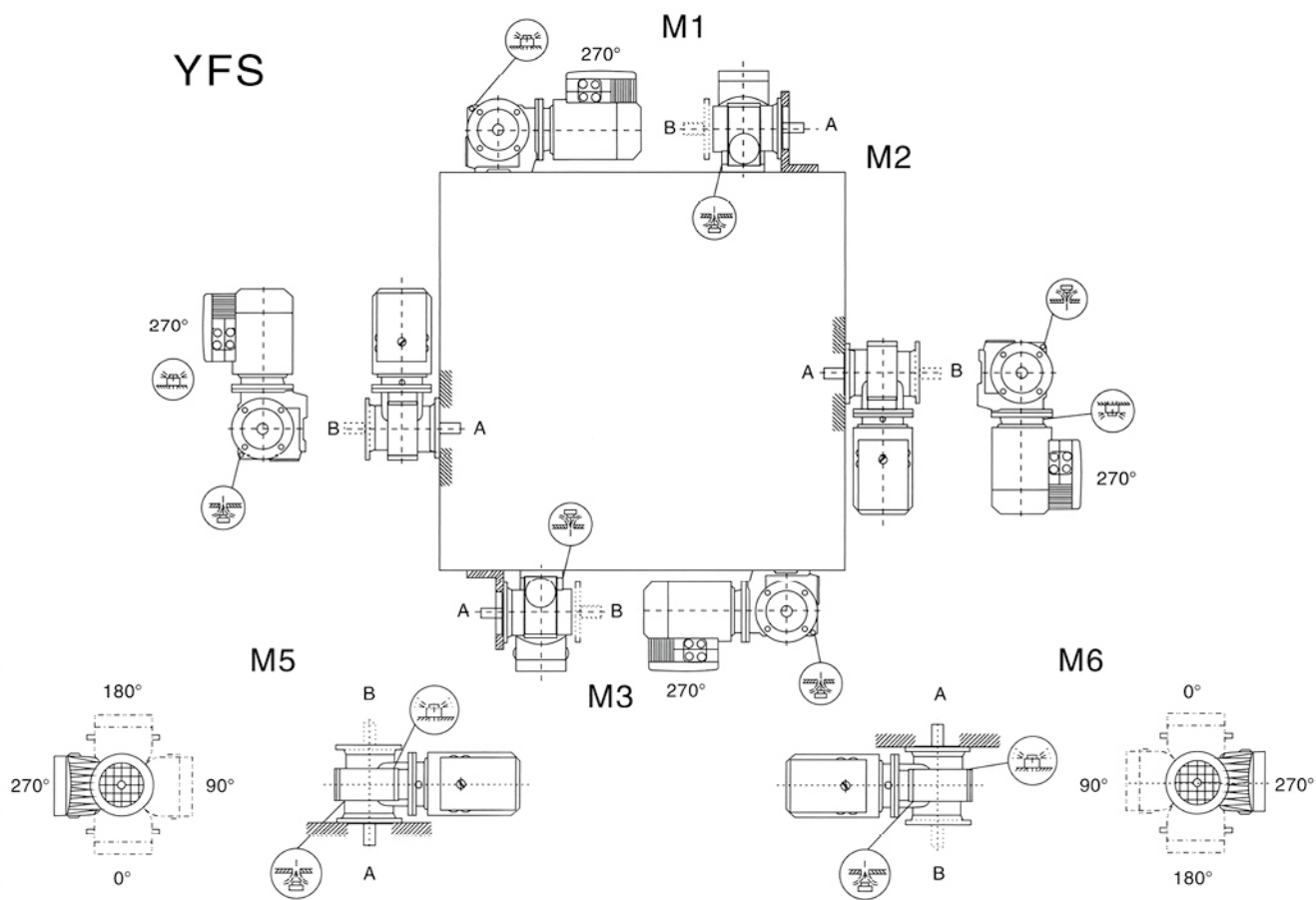
YFF



YFK



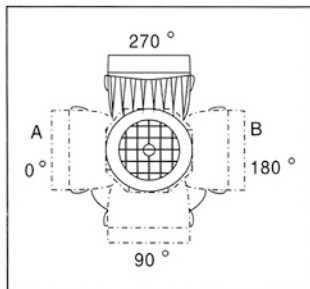
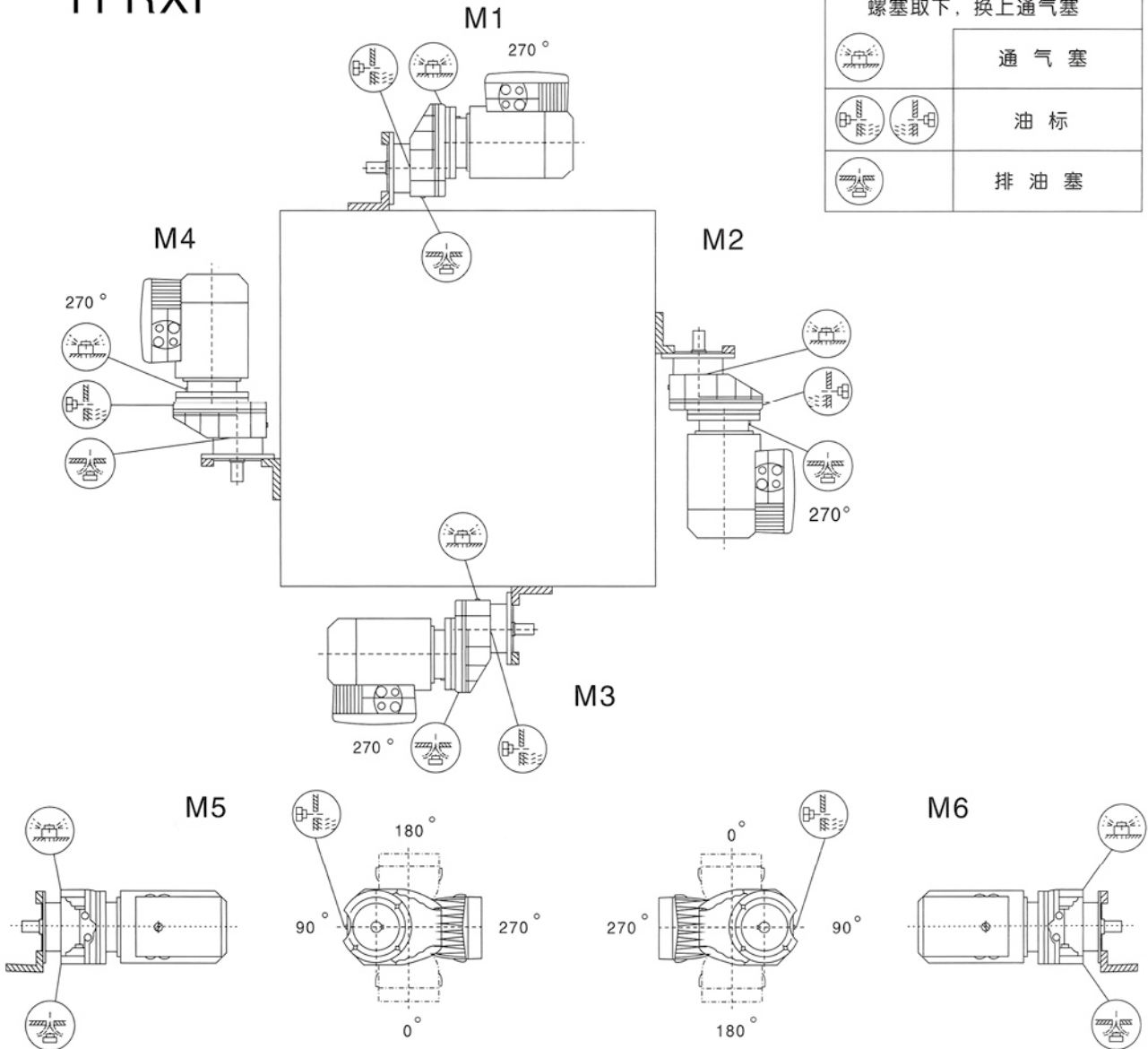
YFS



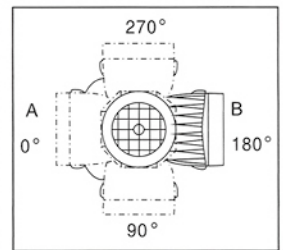
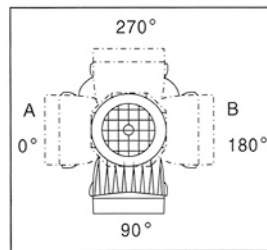
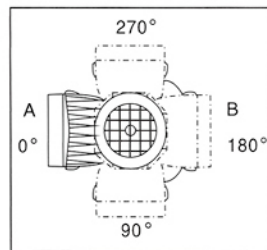
YFRXF

安装完成后将通气孔的
螺塞取下，换上通气塞

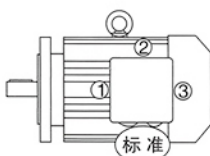
	通气塞
	油标
	排油塞



接线盒 标准安装型式



接线盒 特殊安装型式:



接线孔位置“标准”，“1”、“2”或“3”
(DR63仅用于“标准”和“2”)

YFR.YFF.YFK.YFS...AD

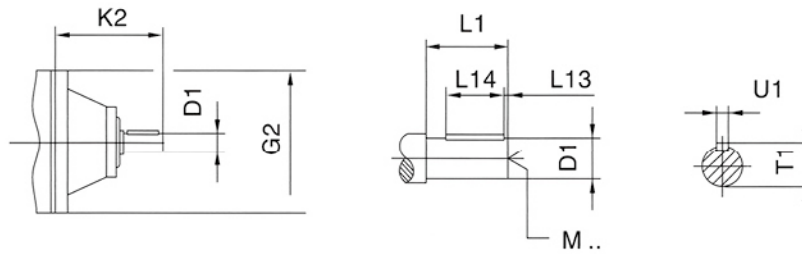


表15 Table15

		G2	K2	D1	L1	L13	L14	T1	U1	M
YFS37 YFR27 YFR37 YFS47 YFF37 YFF47 YFS57 YFK37	AD1	120	102	16	40	4	32	18	5	M5
	AD2		130	19	40	4	32	21.5	6	M6
YFR47 YFR57 YFR67 YFS67 YFF57 YFF67 YFK47 YFK57 YFK67	AD2	160	123	19	40	4	32	21.5	6	M6
	AD3		159	24	50	5	40	27	8	M8
YFS77 YFR77 YFF77 YFK77	AD2	200	116	19	40	4	32	21.5	6	M6
	AD3		151	24	50	5	40	27	8	M8
	AD4		224	38	80	5	70	41	10	M12
YFS87 YFR87 YFF87 YFK87	AD2	250	111	19	40	4	32	21.5	6	M6
	AD3		156	28	60	5	50	31	8	M10
	AD4		219	38	80	5	70	41	10	M12
	AD5		292	42	110	10	70	45	12	M16
YFS97 YFR97 YFF97 YFK97	AD3	300	151	28	60	5	50	31	8	M10
	AD4		214	38	80	5	70	41	10	M12
	AD5		287	42	110	10	70	45	12	M16
	AD6		327	48	110	10	80	51.5	14	M16
YFR107 YFF107 YFK107	AD3	350	145	28	60	5	50	31	8	M10
	AD4		208	38	80	5	70	41	10	M12
	AD5		281	42	110	10	70	45	12	M16
	AD6		321	48	110	10	80	51.5	14	M16
YFR137	AD4	400	201	38	80	5	70	41	10	M12
	AD5		274	42	110	10	70	45	12	M16
	AD6		314	48	110	10	80	51.5	14	M16
	AD7		308	55	110	10	90	59	16	M20
YFR147 YFF127 YFK127	AD4	450	193	38	80	5	70	41	10	M12
	AD5		266	42	110	10	70	45	12	M16
	AD6		306	48	110	10	80	51.5	14	M16
	AD7		300	55	110	10	90	59	16	M20
	AD8		383	70	140	15	110	74.5	20	M20
YFR167 YFF157 YFK157 YFK167 YFK187	AD5	550	258	42	110	15	70	45	12	M16
	AD6		298	48	110	10	80	51.5	14	M16
	AD7		292	55	110	10	90	59	16	M20
	AD8		374	70	140	15	110	74.5	20	M20

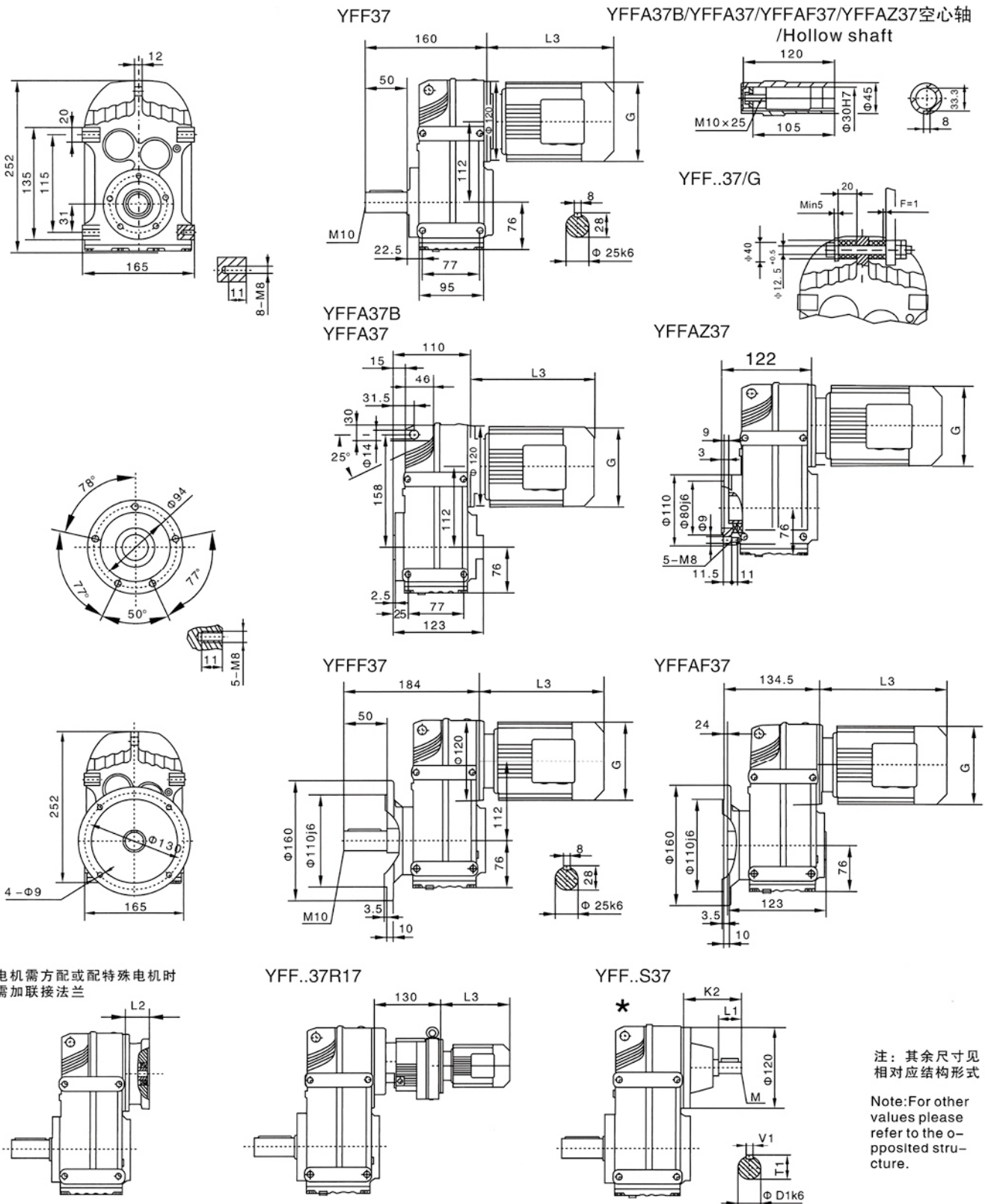
输出转速 output speed na r/min	输出转矩 output torque Ma N.m	传动比 Ratio i	径向载荷 Permissible overhung load outpuside Fa N	使用系数 service factor fb	机型号 Type	极数 Pole	重量 weight kg	输出转速 output speed na r/min	输出转矩 output torque Ma N.m	传动比 Ratio i	径向载荷 Permissible overhung load outpuside Fa N	使用系数 service factor fb	机型号 Type	极数 Pole	重量 weight kg
3kW								3kW							
3.7	7750	254.40	49600	1.00	YFFAI07	6	270	71	405	19.70	4750	1.00	YFFA47	4	42
4.4	6560	215.37	52700	1.15	YFFAF107	6	290	81	355	17.33	4760	1.15	YFFAF47	4	44
4.7	6070	199.31	53900	1.25	YFFI07	6	285	86	335	16.36	4760	1.20	YFF47	4	42
5.3	5440	178.64	55300	1.40	YFFF107	6	315	100	285	13.93	4740	1.40	YFFF47	4	46
								111	260	12.66	4700	1.55			
								128	225	10.97	4640	1.80			
								156	183	8.96	4370	1.80			
								126	225	11.08	2320	0.85	YFFA37	4	37
								134	215	10.42	2350	0.85	YFFAF37	4	39
								156	184	8.97	2390	0.95	YFF37	4	38
								175	164	8.01	2410	1.05	YFFF37	4	40
								208	138	6.74	2290	1.00			
								231	124	6.05	2300	1.10			
								269	107	5.21	2290	1.15			
								286	100	4.90	2280	1.20			
								332	86	4.22	2250	1.25			
								372	77	3.77	2220	1.35			
								4kW							
								1.7	20600	845	91500	0.85	YFFAI57R97	4	790
								1.9	18600	764	98300	0.95	YFFAF157R97	4	850
								2.1	16600	680	104200	1.10	YFFI57R97	4	810
								2.5	14000	576	110300	1.30	YFFF157R97	4	920
								3.2	10900	446	115900	1.65			
								4.7	7390	302	120000	2.4			
								5.2	6670	273	120000	2.7			
								6.1	5640	232	120000	3.2			
								7.2	4780	197	120000	3.8			
								2.6	13600	549	87400	0.90	YFFAI27R77	4	455
								2.9	12200	495	90000	1.00	YFFAF127R77	4	490
								3.3	10600	428	90000	1.15	YFFI27R77	4	490
								3.8	9270	376	90000	1.30	YFFF127R77	4	530
								4.3	8230	333	48300	0.95	YFFAI07R77	4	300
								4.9	7190	291	51100	1.05	YFFAF107R77	4	325
								5.6	6310	255	53300	1.20	YFFI07R77	4	320
													YFFF107R77	4	345
								4.2	9060	170.83	90000	1.30	YFFAI27	8	445
								4.7	8150	153.67	90000	1.45	YFFAF127	8	485
								5.7	6650	125.37	90000	1.80	YFFI27	8	485
													YFFF127	8	530
								5.6	6840	254.40	52000	1.10	YFFAI07	4	265
								6.6	5790	215.37	54500	1.35	YFFAF107	4	285
								7.1	5360	199.31	55500	1.45	YFFI07	4	280
								7.9	4810	178.64	56700	1.60	YFFF107	4	305
								8.8	4340	161.28	57700	1.75			
								9.7	3940	146.49	58500	1.95			
								11	3500	129.97	59400	2.2			
								12	3170	117.94	60100	2.4			
								14	2730	101.38	60900	2.8			
								8.1	4700	174.87	26600	0.90	YFFA97	4	190
								9.1	4200	156.30	30200	1.00	YFFAF97	4	210
								10	3780	140.71	31400	1.15	YFF97	4	195
								11	3430	127.42	32300	1.25	YFFF97	4	230
								13	3040	112.99	33200	1.40			
								14	2750	102.16	33900	1.55			
								15	2620	97.58	34100	1.65			
								16	2420	89.85	34600	1.80			
								18	2160	80.31	35100	2.0			
								20	1940	72.29	35500	2.2			
								22	1760	65.47	35800	2.4			
								13	2950	109.49	21700	1.00	YFFA87	4	125
								15	2630	97.89	24300	1.15	YFFAF87	4	135
								16	2370	88.01	24600	1.25	YFF87	4	130
								19	2050	76.39	24200	1.45	YFFF87	4	145
								21	1840	68.40	23900	1.65			
								25	1530	56.75	23200	1.95			
								28	1350	50.36	22800	2.2			
								31	1220	45.28	22300	2.3			
								56	510	24.96	7440	1.15	YFFA57	4	51
								66	435	21.17	7340	1.40	YFFAF57	4	56
								73	390	19.11	7260	1.55	YFF57	4	51
								83	345	16.81	7140	1.75	YFFF57	4	57
								88	325	15.88	7080	1.85			
								104	275	13.52	6890	2.2			
								114	250	12.29	6780	2.4			
								132	220	10.64	6590	2.8			

输出转速 output speed na r/min	输出转矩 output torque Ma N.m	传动比 Ratio i	径向载荷 Permissible overhung load outsidside Fa N	使用系数 service factor fb	机型号 Type	极数 Pole	重量 weight kg	输出转速 output speed na r/min	输出转矩 output torque Ma N.m	传动比 Ratio i	径向载荷 Permissible overhung load outsidside Fa N	使用系数 service factor fb	机型号 Type	极数 Pole	重量 weight kg
22kW								30kW							
43	4850	33.79	44300	1.55	YFFA107	4	410	66	4310	22.11	15100	1.00	YFFA97	4	380
53	3950	27.57	43300	2.0	YFFAF107	4	430	73	3910	20.07	15500	1.10	YFFAF97	4	405
58	3610	25.14	42800	2.2	YFF107	4	425	85	3360	17.25	16000	1.30	YFF97	4	390
67	3120	21.76	41900	2.5	YFFF107	4	450	98	2930	15.06	16300	1.35	YFFF97	4	420
76	2750	19.20	41000	2.8				115	2490	12.77	16400	1.45			
								132	2180	11.16	16400	1.45			
53	3940	27.44	18700	1.10	YFFA97	4	330	162	1770	9.06	15400	1.70			
59	3570	24.92	18900	1.20	YFFAF97	4	350	179	1600	8.22	15300	1.75			
66	3170	22.11	19100	1.35	YFF97	4	335	208	1380	7.07	15100	1.85			
73	2880	20.07	19200	1.50	YFFF97	4	370	238	1200	6.17	14900	1.90			
85	2470	17.25	19100	1.75				281	1020	5.23	14600	2.1			
97	2160	15.06	19000	2.0				321	890	4.57	14300	2.3			
115	1830	12.77	18700	2.3				37kW							
131	1600	11.16	18400	2.6				17	20600	85.80	88600	0.85	YFFA157	4	910
								19	18900	78.46	88700	0.95	YFFAF157	4	970
69	3060	21.32	8990	1.00	YFFA87	4	265	22	16400	68.28	88400	1.10	YFF157	4	930
76	2770	19.31	9430	1.10	YFFAF87	4	280	24	14500	60.25	87800	1.25	YFFF157	4	1040
86	2460	17.12	9850	1.20	YFF87	4	270	28	12600	52.24	86800	1.45			
95	2220	15.48	10100	1.35	YFFF87	4	285	32	11200	46.48	85700	1.60			
112	1880	13.12	10400	1.60				37	9630	40.06	84000	1.85			
128	1640	11.46	10600	1.85				45	7820	32.55	81400	2.3			
153	1370	9.58	10600	2.1				53	6630	27.60	79100	2.7			
177	1190	8.29	10100	1.30											
199	1050	7.35	10100	1.45				27	13300	55.31	60900	0.90	YFFA127	4	660
220	950	6.65	10000	1.60				30	11700	48.80	61100	1.00	YFFAF127	4	690
260	810	5.63	9900	1.90				35	10100	42.15	61100	1.20	YFF127	4	690
298	705	4.92	9750	2.2				39	8960	37.28	60700	1.30	YFFF127	4	740
356	590	4.12	9500	2.5				47	7530	31.33	59900	1.35			
30kW								55	6460	26.86	58900	1.45			
14	21100	108.49	89600	0.85	YFFA157	4	860	58	6080	25.30	58500	1.60			
15	18800	96.53	96900	0.95	YFFAF157	4	920	60	5910	24.57	58300	1.95			
17	16700	85.80	96400	1.10	YFF157	4	880	69	5140	21.38	57100	2.3			
19	15300	78.46	95800	1.20	YFFF157	4	990	78	4530	18.87	56000	2.4			
22	13300	68.28	94600	1.35				90	3930	16.36	54600	2.8			
24	11700	60.25	93300	1.55				101	3500	14.55	53400	3.1			
28	10200	52.24	91500	1.75				117	3010	12.54	51900	3.3			
32	9060	46.48	89900	2.0				144	2450	10.19	49600	3.9			
37	7810	40.06	87700	2.3				166	2130	8.86	47700	3.3			
								186	1890	7.88	46500	3.2			
19	14700	75.41	66600	0.80	YFFA127	4	610	53	6630	27.57	36200	1.20	YFFA107	4	500
21	13700	70.07	66800	0.90	YFFAF127	4	650	58	6040	25.14	36200	1.30	YFFAF107	4	520
23	12500	63.91	66900	0.95	YFF127	4	650	68	5230	21.76	36200	1.50	YFF107	4	520
27	10800	55.31	66700	1.10	YFFF127	4	690	77	4610	19.20	36000	1.70	YFFF107	4	550
30	9510	48.80	66300	1.25				89	3990	16.58	35600	1.95			
35	8210	42.15	65500	1.45				100	3530	14.67	35100	2.1			
39	7270	37.28	64700	1.60				119	2960	12.33	34400	2.2			
47	6110	31.33	63200	1.65				148	2390	9.96	33300	2.4			
55	5240	26.86	61800	1.80				152	2330	9.69	32400	2.4			
58	4930	25.30	61200	1.95				176	2010	8.37	31700	2.6			
60	4790	24.57	60900	2.4				199	1780	7.40	31000	2.7			
69	4170	21.38	59400	2.9				236	1500	6.22	30000	3.1			
78	3680	18.87	58000	3.0				45kW							
								22	20000	68.28	81300	0.90	YFFA157	4	940
34	8390	43.03	39200	0.90	YFFA107	4	465	24	17600	60.25	81600	1.00	YFFAF157	4	1000
39	7330	37.61	39600	1.05	YFFAF107	4	485	28	15300	52.24	81300	1.20	YFF157	4	960
46	6200	31.80	39700	1.25	YFF107	4	480	32	13600	46.48	80900	1.30	YFFF157	4	1070
53	5370	27.57	39500	1.45	YFFF107	4	510	37	11700	40.06	79900	1.55			
58	4900	25.14	39300	1.60				45	9510	32.55	78000	1.90			
68	4240	21.76	38800	1.85				53	8070	27.60	76200	2.2			
77	3740	19.20	38300	2.1											
89	3230	16.58	37600	2.4				30	14300	48.80	55200	0.85	YFFA127	4	690
100	2860	14.67	36900	2.7				35	12300	42.15	56000	0.95	YFFAF127	4	720
119	2400	12.33	35900	2.9				39	10900	37.28	56200	1.10	YFF127	4	720
148	1940	9.96	34500	3.3				47	9160	31.33	56100	1.15	YFFF127	4	770
								55	7850	26.86	55700	1.20			
								58	7400	25.30	55400	1.30			

输出转矩 output torque Ma N.m	输出转速 output speed na r/min	传动比 Ratio i	径向载荷 Permissible overhung load outputside Fa N	机型号 Type	功率 Power kw/4p	重量 weight kg	输出转矩 output torque Ma N.m	输出转速 output speed na r/min	传动比 Ratio i	径向载荷 Permissible overhung load outputside Fa N	机型号 Type	功率 Power kw/4p	重量 weight kg			
820	0.07	19199	10300	YFFA67R37	0.12	43	1500	0.27	5026	15700	YFFA77R37	0.12	65			
	0.08	17610		YFFAF67R37	0.12	49		0.31	4435		YFFAF77R37	0.12	72			
	0.09	14992		YFF67R37	0.12	46		0.36	3832		YFF77R37	0.12	69			
	0.11	12926		YFFF67R37	0.12	52		0.46	2978		YFFF77R37	0.12	80			
	0.12	11480						0.53	2613							
	0.14	10220						0.60	2284							
	0.15	8933						1500	0.65		2029	15700	YFFA77R37	0.18	65	
	0.17	7940							0.76		1728	YFFAF77R37	0.18	72		
	0.19	7096							0.86		1544	YFF77R37	0.18	69		
	0.23	6080							0.98		1354	YFFF77R37	0.18	80		
	0.26	5341							1500		1.1	1200	15700	YFFA77R37	0.25	66
	0.29	4690						1.2			1053	YFFAF77R37	0.25	72		
	0.34	4091										YFF77R37	0.25	70		
	0.39	3574										YFFF77R37	0.25	80		
	0.41	3377						1500			1.5	910	15700	YFFA77R37	0.37	67
	0.44	3133									1.7	810	YFFAF77R37	0.37	73	
	0.47	2912									1.9	710	YFF77R37	0.37	71	
	0.50	2756											YFFF77R37	0.37	81	
	0.51	2714									1500	2.2	615	15700	YFFA77R37	0.55
	0.57	2439						2.5				538	YFFAF77R37	0.55	75	
0.58	2372				2.8	480	YFF77R37	0.55	73							
0.65	2126						YFFF77R37	0.55	83							
0.73	1884				1500	3.3	413	15700	YFFA77R37	0.75		70				
0.85	1631					3.8	367	YFFAF77R37	0.75	76						
0.96	1437					4.3	323	YFF77R37	0.75	74						
820	1.2	1126	10300	YFFA67R37	0.18	42	1500	3.8	367	15700	YFFAF77R37	0.75	76			
	1.3	984		YFF67R37	0.18	48					YFF77R37	0.75	74			
	1.5	864		YFFF67R37	0.18	51					YFFF77R37	0.75	84			
820	1.8	722	10300	YFFA67R37	0.25	43	3000	0.06	23042	19800	YFFA87R57	0.12	120			
	2.0	634		YFFAF67R37	0.25	49		0.07	20462		YFFAF87R57	0.12	130			
	2.4	539		YFF67R37	0.25	46		0.08	18238		YFF87R57	0.12	125			
				YFFF67R37	0.25	52		0.09	15877		YFFF87R57	0.12	140			
								0.10	14099							
820	2.8	500	10300	YFFA67R37	0.37	43		0.11	12205							
	3.0	454		YFFAF67R37	0.37	50		0.13	10433							
	3.5	392		YFF67R37	0.37	46		0.15	9381							
				YFFF67R37	0.37	52		0.17	8142							
								0.19	7100							
820	4.1	333	10300	YFFA67R37	0.55	45		0.22	6273							
	4.6	297		YFFAF67R37	0.55	52		0.25	5510							
	5.2	261		YFF67R37	0.55	48		0.28	4954							
	5.7	238		YFFF67R37	0.55	54										
								3000	0.31		4245	19800	YFFA87R57	0.18	120	
820	6.9	200	10300	YFFA67R37	0.75	46	0.35		3721	YFFAF87R57	0.18	130				
				YFFAF67R37	0.75	53	0.41		3244	YFF87R57	0.18	125				
				YFF67R37	0.75	49	0.46		2881	YFFF87R57	0.18	140				
				YFFF67R37	0.75	55										
							3000	0.50	2576	19800	YFFA87R57	0.25	120			
1500	0.07	19180	15700	YFFA77R37	0.12	65		0.59	2199	YFFAF87R57	0.25	130				
	0.08	17593		YFFAF77R37	0.12	72		0.67	1930	YFF87R57	0.25	125				
	0.09	16128		YFF77R37	0.12	69				YFFF87R57	0.25	140				
	0.10	13731		YFFF77R37	0.12	80		3000	0.81	1709	19800	YFFA87R57	0.37	120		
	0.11	12049					0.92		1493	YFFAF87R57	0.37	130				
0.13	11035						YFF87R57		0.37	125						
0.14	9683						YFFF87R57		0.37	140						
0.16	8464				3000	1.0	1300		19800	YFFA87R57	0.55	120				
0.18	7520					1.2	1148	YFFAF87R57	0.55	135						
0.21	6580					1.4	1010	YFF87R57	0.55	125						
0.24	5808					1.5	887	YFFF87R57	0.55	145						

输出转矩 output torque Ma N.m	输出转速 output speed na r/min	传动比 Ratio i	径向载荷 Permissible overhung load outpside Fa N	机型号 Type	功率 Power kw/4p	重量 weight kg	输出转矩 output torque Ma N.m	输出转速 output speed na r/min	传动比 Ratio i	径向载荷 Permissible overhung load outpside Fa N	机型号 Type	功率 Power kw/4p	重量 weight kg		
3000	1.8	780	19800	YFFA87R57	0.75	120	4300	4.9	285	29900	YFFA97R57	3	205		
	2.0	674		YFFAF87R57	0.75	135		5.7	245		YFFAF97R57	3	225		
				YFF87R57	0.75	130					YFF97R57	3	215		
				YFFF87R57	0.75	145					YFFF97R57	3	245		
3000	2.3	609	19800	YFFA87R57	1.1	125	7680	0.05	25375	49800	YFFA107R77	0.12	275		
	2.7	515		YFFAF87R57	1.1	140		0.06	21652		YFFAF107R77	0.12	295		
	3.1	452		YFF87R57	1.1	135		0.07	18933		YFF107R77	0.12	290		
				YFFF87R57	1.1	150		0.08	16888		YFFF107R77	0.12	320		
3000	4.1	345	19800	YFFA87R57	1.5	130	7680	0.12	11348	49800	YFFA107R77	0.18	275		
				YFFAF87R57	1.5	140		0.13	10039		YFFAF107R77	0.18	295		
				YFF87R57	1.5	135		0.15	8548		YFF107R77	0.18	290		
				YFFF87R57	1.5	150		0.17	7674		YFFF107R77	0.18	320		
4300	0.07	20813	29900	YFFA97R57	0.12	185	7680	0.19	6767	49800	YFFA107R77	0.25	275		
	0.08	18119		YFFAF97R57	0.12	205		0.22	5954		YFFAF107R77	0.25	295		
	0.09	15472		YFF97R57	0.12	190		0.25	5223		YFF107R77	0.25	290		
	0.10	14022		YFFF97R57	0.12	225					YFFF107R77	0.25	320		
	0.11	12324						7680	0.30		4567	49800	YFFA107R77	0.37	275
	0.13	10838							0.39		3521		YFFAF107R77	0.37	295
	0.14	9576							YFF107R77		0.37		290		
	0.17	8318							YFFF107R77		0.37		320		
	0.19	7328													
4300	0.20	6469	29900	YFFA97R57	0.18	185	7680	0.45	3037	49800	YFFA107R77	0.55	275		
	0.24	5615		YFFAF97R57	0.18	205		0.49	2756		YFFAF107R77	0.55	300		
	0.27	4961		YFF97R57	0.18	190		0.57	2369		YFF107R77	0.55	295		
	0.30	4333		YFFF97R57	0.18	225					YFFF107R77	0.55	320		
4300	0.33	3906	29900	YFFA97R57	0.25	185	7680	0.67	2068	49800	YFFA107R77	0.75	280		
	0.39	3352		YFFAF97R57	0.25	205		0.76	1826		YFFAF107R77	0.75	300		
	0.45	2907		YFF97R57	0.25	190					YFF107R77	0.75	295		
				YFFF97R57	0.25	225					YFFF107R77	0.75	325		
4300	0.54	2553	29900	YFFA97R57	0.37	185	7680	0.88	1597	49800	YFFA107R77	1.1	285		
	0.61	2245		YFFAF97R57	0.37	205		1.0	1401		YFFAF107R77	1.1	305		
	0.70	1970		YFF97R57	0.37	190		1.1	1243		YFF107R77	1.1	300		
				YFFF97R57	0.37	225					YFFF107R77	1.1	330		
4300	0.79	1722	29900	YFFA97R57	0.55	185	7680	1.3	1087	49800	YFFA107R77	1.5	285		
	0.89	1527		YFFAF97R57	0.55	210		1.5	950		YFFAF107R77	1.5	305		
	1.0	1327		YFF97R57	0.55	195					YFF107R77	1.5	300		
				YFFF97R57	0.55	225					YFFF107R77	1.5	330		
4300	1.2	1171	29900	YFFA97R57	0.75	190	7680	1.7	834	49800	YFFA107R77	2.2	290		
	1.4	1022		YFFAF97R57	0.75	210		1.9	736		YFFAF107R77	2.2	315		
				YFF97R57	0.75	195		2.2	640		YFF107R77	2.2	310		
				YFFF97R57	0.75	230					YFFF107R77	2.2	335		
4300	1.6	898	29900	YFFA97R57	1.1	195	7680	2.5	560	49800	YFFA107R77	3	295		
	1.8	784		YFFAF97R57	1.1	215		2.9	489		YFFAF107R77	3	315		
	2.0	690		YFF97R57	1.1	200		3.2	436		YFF107R77	3	310		
				YFFF97R57	1.1	235					YFFF107R77	3	340		
4300	2.3	605	29900	YFFA97R57	1.5	195	7680	3.8	370	49800	YFFA107R77	4	300		
	2.7	529		YFFAF97R57	1.5	215		4.3	333		YFFAF107R77	4	325		
	3.0	467		YFF97R57	1.5	200					YFF107R77	4	320		
				YFFF97R57	1.5	235					YFFF107R77	4	345		
4300	3.5	406	29900	YFFA97R57	2.2	200	12000	0.06	24478	90000	YFFA127R77	0.12	425		
	3.9	363		YFFAF97R57	2.2	225		0.07	19048		YFFAF127R77	0.12	465		
				YFF97R57	2.2	210					YFF127R77	0.12	460		
				YFFF97R57	2.2	240					YFFF127R77	0.12	510		

输出转矩 output torque Ma N.m	输出转速 output speed na r/min	传动比 Ratio i	径向载荷 Permissible overhung load outputside Fa N	机型号 Type	功率 Power kw/4p	重量 weight kg	输出转矩 output torque Ma N.m	输出转速 output speed na r/min	传动比 Ratio i	径向载荷 Permissible overhung load outputside Fa N	机型号 Type	功率 Power kw/4p	重量 weight kg
12000	0.08	16656	90000	YFFA127R77	0.18	425	12000	7.3	198	90000	YFFA127R77	11	510
	0.09	14722		YFFAF127R77	0.18	465					YFFAF127R77	11	550
	0.10	12912		YFFI27R77	0.18	460					YFFI27R77	11	550
	0.11	11656		YFFF127R77	0.18	510					YFFF127R77	11	600
12000	0.13	10191	90000	YFFA127R77	0.25	425	18000	0.04	31434	100300	YFFA157R97	0.55	770
	0.15	8831		YFFAF127R77	0.25	465					YFFAF157R97	0.55	820
				YFFI27R77	0.25	465					YFFI57R97	0.55	790
				YFFF127R77	0.25	510					YFFF157R97	0.55	890
12000	0.18	7643	90000	YFFA127R77	0.37	425	18000	0.05	26173	100300	YFFA157R97	0.75	770
	0.21	6715		YFFAF127R77	0.37	465					YFFAF157R97	0.75	830
	0.23	5925		YFFI27R77	0.37	465					YFFI57R97	0.75	790
				YFFF127R77	0.37	510					YFFF157R97	0.75	890
12000	0.26	5153	90000	YFFA127R77	0.55	430	18000	0.06	23464	100300	YFFA157R97	1.1	770
	0.30	4533		YFFAF127R77	0.55	465					YFFAF157R97	1.1	830
	0.35	3926		YFFI27R77	0.55	465					YFFI57R97	1.1	790
				YFFF127R77	0.55	510					YFFF157R97	1.1	900
12000	0.40	3454	90000	YFFA127R77	0.75	430	18000	0.07	20212	100300	YFFA157R97	1.5	770
	0.46	3031		YFFAF127R77	0.75	470					YFFAF157R97	1.5	830
	0.52	2672		YFFI27R77	0.75	465					YFFI57R97	1.5	790
				YFFF127R77	0.75	510					YFFF157R97	1.5	900
12000	0.59	2357	90000	YFFA127R77	1.1	435	18000	0.08	17984	100300	YFFA157R97	2.2	780
	0.69	2038		YFFAF127R77	1.1	470					YFFAF157R97	2.2	840
	0.79	1784		YFFI27R77	1.1	470					YFFI57R97	2.2	800
				YFFF127R77	1.1	520					YFFF157R97	2.2	910
12000	0.88	1606	90000	YFFA127R77	1.5	435	18000	0.09	1674	100300	YFFA157R97	3	780
	1.0	1390		YFFAF127R77	1.5	475					YFFAF157R97	3	840
				YFFI27R77	1.5	470					YFFI57R97	3	800
				YFFF127R77	1.5	520					YFFF157R97	3	910
12000	1.2	1220	90000	YFFA127R77	2.2	445	18000	0.10	15235	100300	YFFA157R97	4	790
	1.3	1077		YFFAF127R77	2.2	480					YFFAF157R97	4	850
	1.5	930		YFFI27R77	2.2	480					YFFI57R97	4	810
				YFFF127R77	2.2	520					YFFF157R97	4	920
12000	1.7	820	90000	YFFA127R77	3	445	18000	0.11	12235	100300	YFFA157R97	5.5	800
	1.9	727		YFFAF127R77	3	485					YFFAF157R97	5.5	850
	2.2	648		YFFI27R77	3	485					YFFI57R97	5.5	820
				YFFF127R77	3	530					YFFF157R97	5.5	920
12000	2.6	549	90000	YFFA127R77	4	455	18000	0.12	1169	100300	YFFA157R97	7.5	820
	2.9	495		YFFAF127R77	4	490					YFFAF157R97	7.5	870
				YFFI27R77	4	490					YFFI57R97	7.5	840
				YFFF127R77	4	530					YFFF157R97	7.5	940
12000	3.3	428	90000	YFFA127R77	5.5	460	18000	0.14	10033	100300	YFFA157R97	11	830
	3.8	376		YFFAF127R77	5.5	495					YFFAF157R97	11	890
				YFFI27R77	5.5	495					YFFI57R97	11	850
				YFFF127R77	5.5	540					YFFF157R97	11	960
12000	3.0	483	90000	YFFA127R77	5.5	480	18000	0.16	9021	100300	YFFA157R97	15	870
	3.4	418		YFFAF127R77	5.5	520					YFFAF157R97	15	930
	3.8	374		YFFI27R77	5.5	520					YFFI57R97	15	890
				YFFF127R77	5.5	560					YFFF157R97	15	1000
12000	4.6	312	90000	YFFA127R77	7.5	500	18000	0.17	8026	100300	YFFA157R97	18.5	920
	4.9	293		YFFAF127R77	7.5	540					YFFAF157R97	18.5	980
				YFFI27R77	7.5	540					YFFI57R97	18.5	940
				YFFF127R77	7.5	580					YFFF157R97	18.5	1050



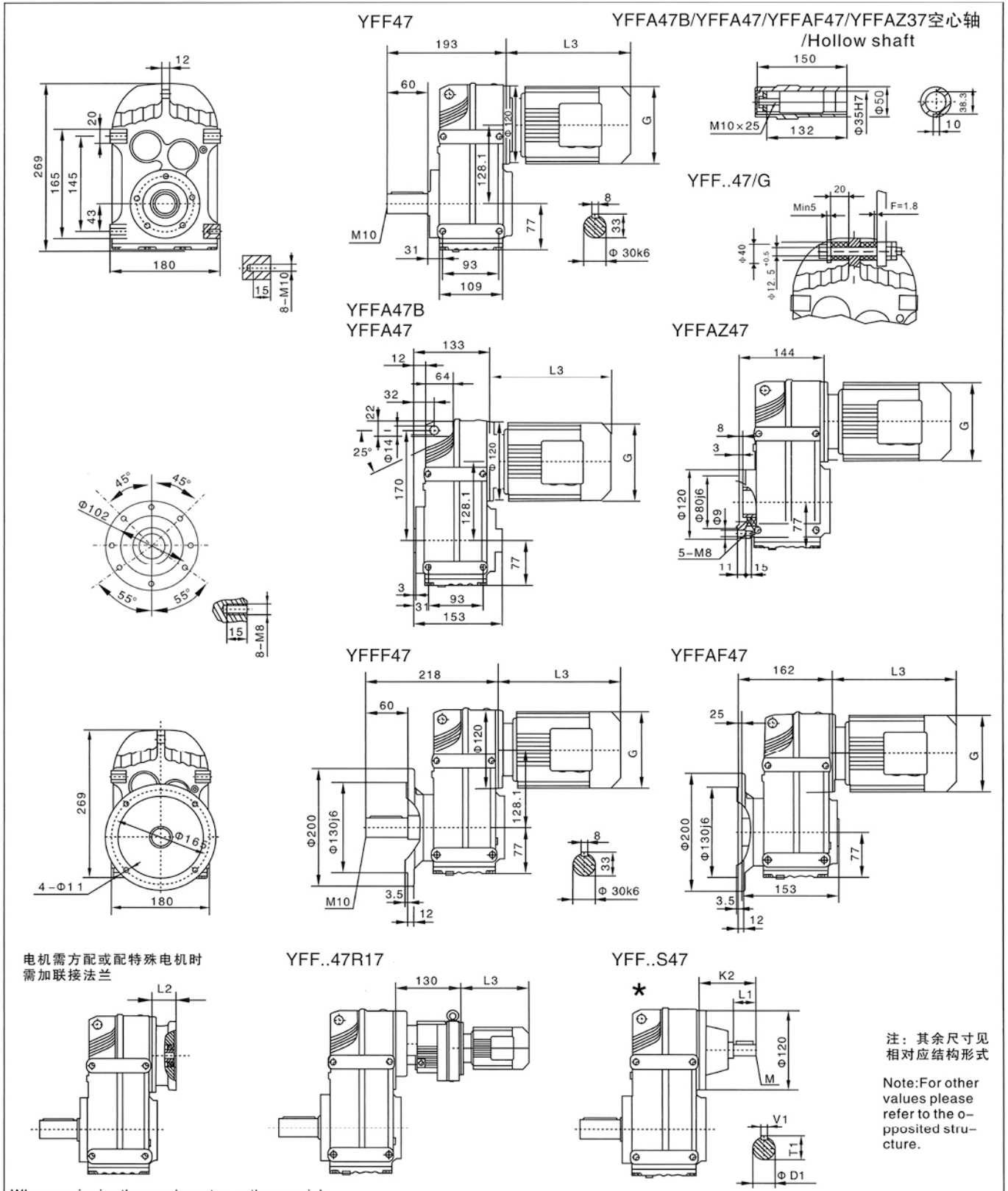
注：其余尺寸见
相对应结构形式
Note: For other
values please
refer to the o-
pposited stru-
cture.

电机需方配或配特殊电机时
需加联接法兰

When equipping the user's motor or the special
one, the flange is required to be connected.

Y2电机机座号 Motor size	63	71	80	90S	90L	100	查表15 See table15
功率/4P Power/(kW)	0.12 0.18	0.25 0.37	0.55 0.75	1.1	1.5	2.2 3	i=50~129查AD1
L3	235	250	293	308	333	347	i=3.7~50查AD2
G	130	145	175	195	195	215	
L2	70	68	78.5	78.5	78.5	90	

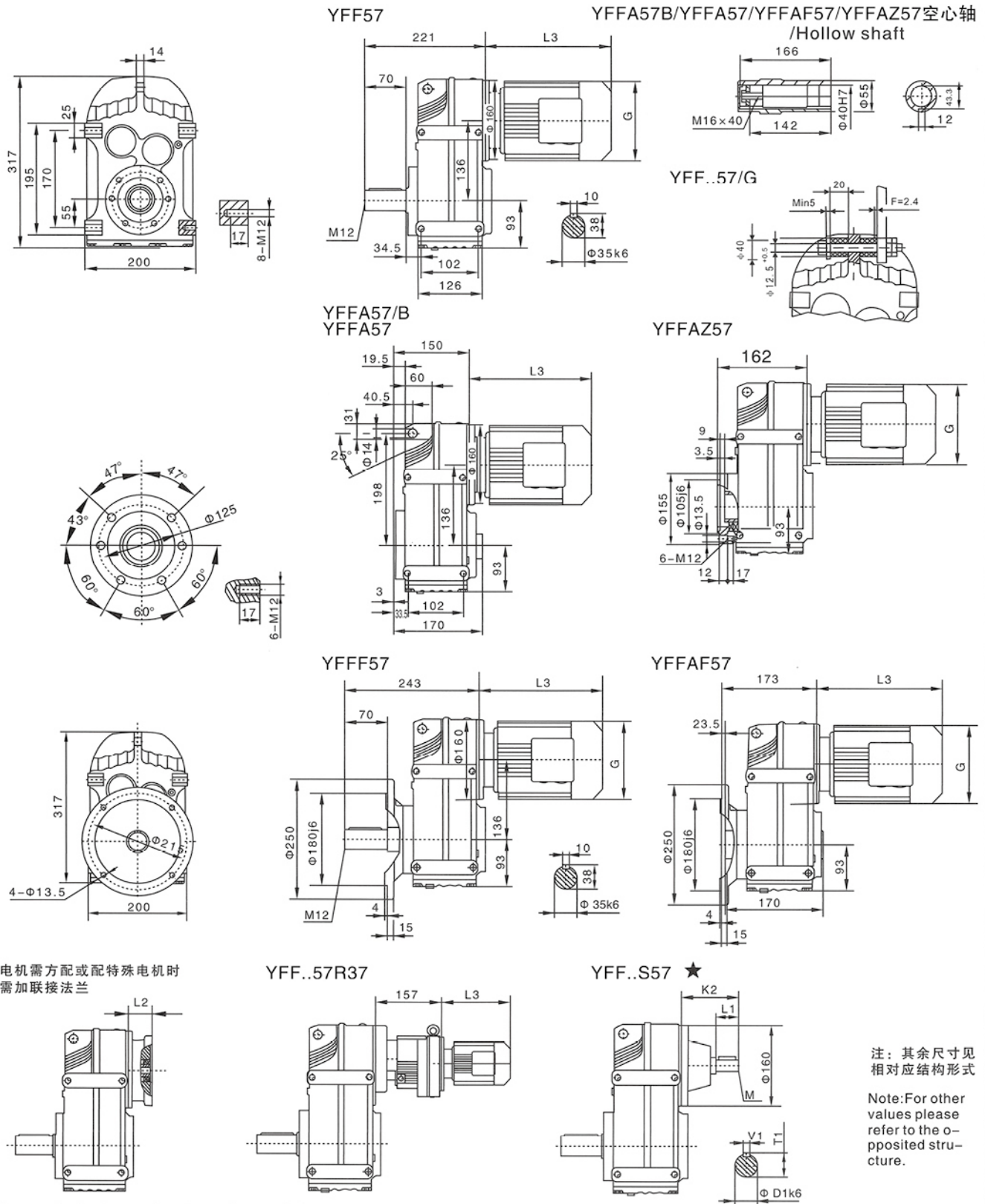
注:1.以上壳体为通用件,安装尺寸均可相互参照 2.YFF..*表示YFFA、YFFF、YFFAF、YFFAZ
Note:1.The above housings are common parts.The mounting dimensions may consult each other. 2.YFF..*meanYFF、YFFA、YFFF、YFFAF、YFFAZ
★查表:15 Seetable:15



注：其余尺寸见相对应结构形式
Note: For other values please refer to the o-posed structure.

Y2电机座号 Motor size	63	71		80		90S	90L	100		查表15 See table15
功率/4P Power/(kW)	0.18	0.25	0.37	0.55	0.75	1.1	1.5	2.2	3	i=68~190.76查AD ₁
L3	235	250		293		308	333	347		i=4~68查AD ₂
G	130	145		175		195	195	215		
L2	70	68		78.5		78.5	78.5	90		

注:1.以上壳体为通用件,安装尺寸均可相互参照 2.YFF..*表示YFFA、YFFF、YFFAF、YFFAZ
Note:1.The above housings are common parts.The mounting dimensions may consult each other. 2.YFF..* mean YFF、YFFA、YFFF、YFFAF、YFFAZ
★查表:15 Seetable:15



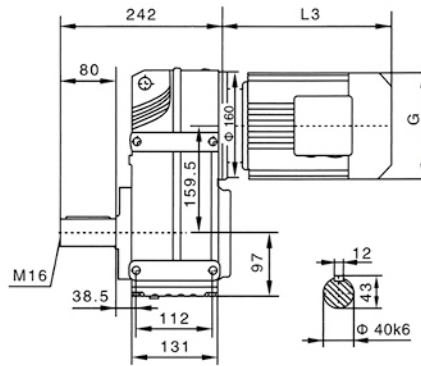
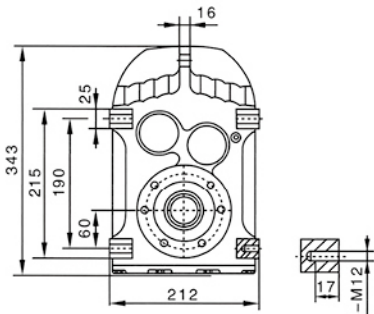
注：其余尺寸见
相对应结构形式
Note: For other
values please
refer to the o-
pposited struc-
ture.

When equipping the user's motor or the special one, the flange is required to be connected.

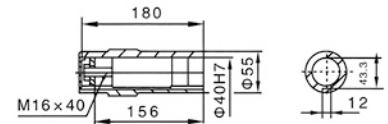
Y2电机机座号 Motor size	63		71		80		90S	90L	100		112M	132S
功率/4P Power/(kW)	0.12	0.18	0.25	0.37	0.55	0.75	1.1	1.5	2.2	3	4	5.5
L3	223	244	293	304	329	357	383	428				
G	130	145	175	195	195	215	240	275				
L2	56	57	72	72	72	74	74	82				

注:1.以上壳体为通用件,安装尺寸均可相互参照 2.YFF.. "表示YFFA、YFFF、YFFAF、YFFAZ
Note:1.The above housings are common parts.The mounting dimensions may consult each other. 2.YFF.. " mean YFF、YFFA、YFFF、YFFAF、YFFAZ
★查表:15 Seetable:15 查表15: i=25-200查AD2 i=5.18-25查AD3

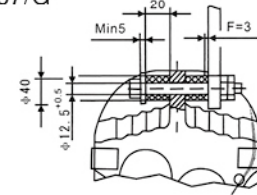
YFF67



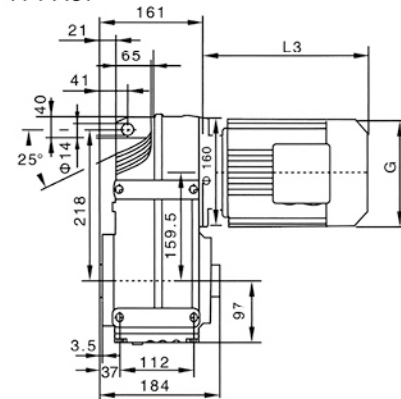
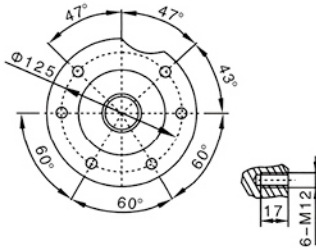
YFFA67B/YFFA67/YFFAF67/YFFAZ67空心轴 /Hollow shaft



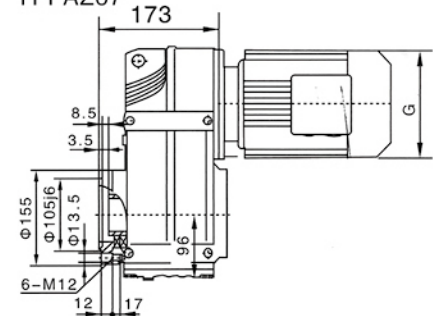
YFF..67/G



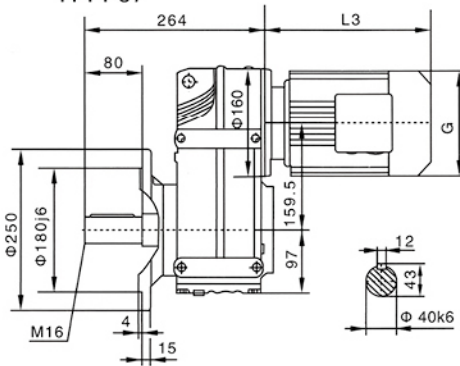
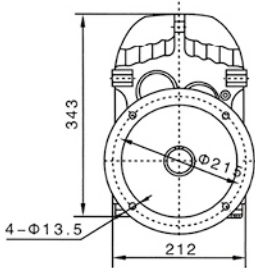
YFFA67B
YFFA67



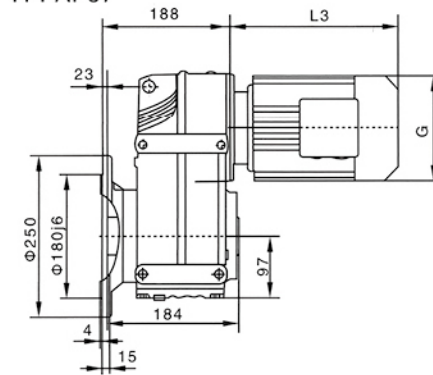
YFFAZ67



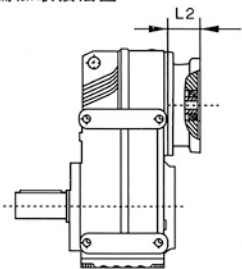
YFFF67



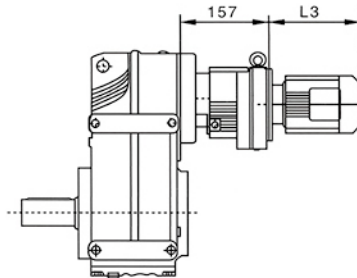
YFFAF67



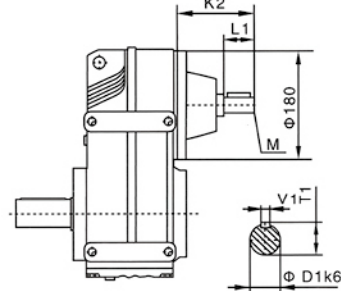
电机需配或配特殊电机时需加联接法兰



YFF..67R37



YFF..S67★



注：其余尺寸见相对应结构形式

Note: For other values please refer to the opposite structure.

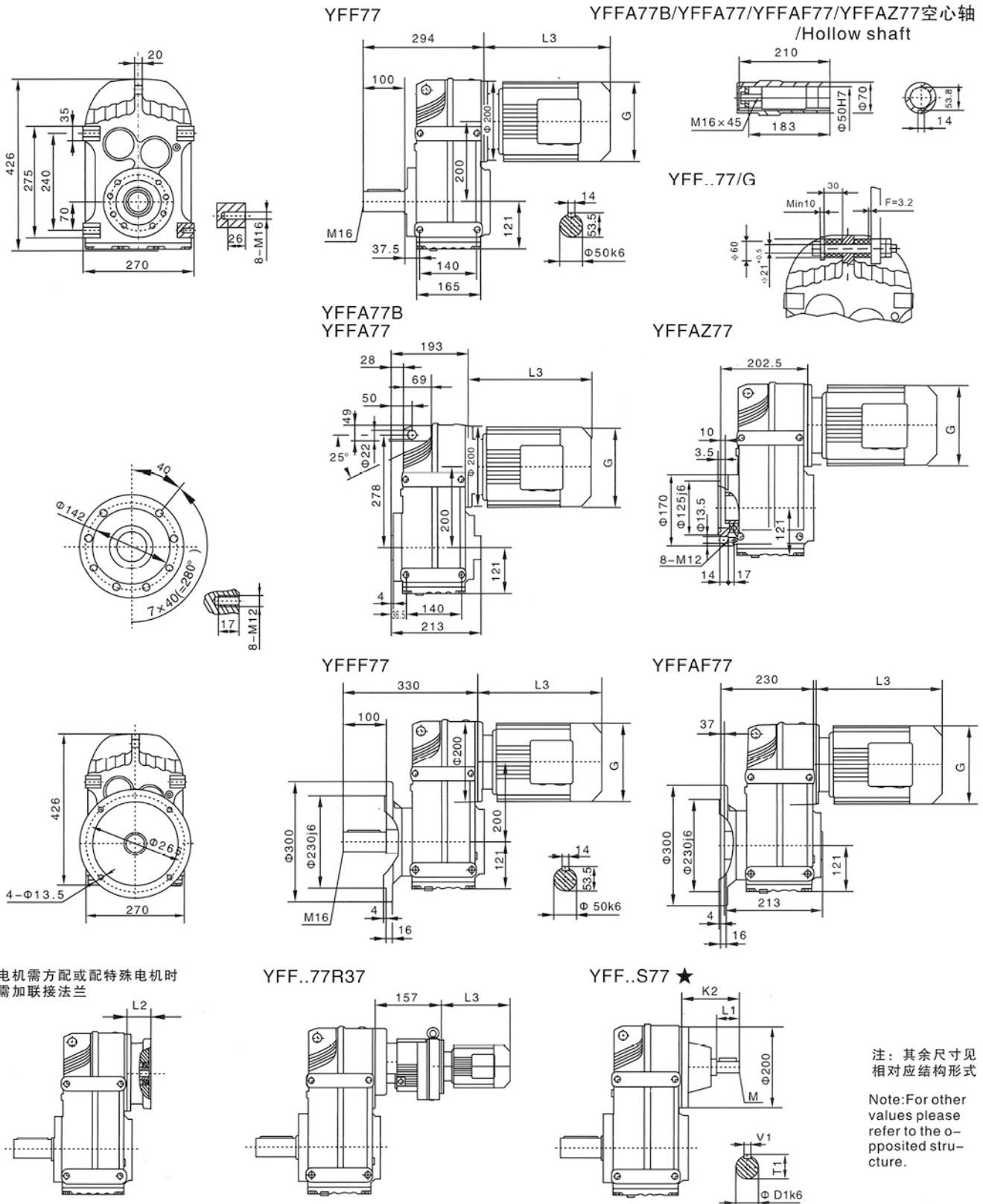
When equipping the user's motor or the special one, the flange is required to be connected.

Y2电机座号 Motor size	63		71		80		90S	90L	100		112M	132S
功率/4P Power/(kW)	0.12	0.18	0.25	0.37	0.55	0.75	1.1	1.5	2.2	3	4	5.5
L3	223		244		293		304	329	357		383	428
G	130		145		175		195	195	215		240	275
L2	70		84		85		85	85	91		91	112

注: 1. 以上壳体为通用件, 安装尺寸均可相互参照 2. YFF.. " 表示YFFA, YFFF, YFFAF, YFFAZ

Note: 1. The above housings are common parts. The mounting dimensions may consult each other. 2. YFF.. " mean YFF, YFFA, YFFF, YFFAF, YFFAZ

★查表: 15 Seetable: 15 查表15: i=36-229查AD2 i=3.9-36查AD3



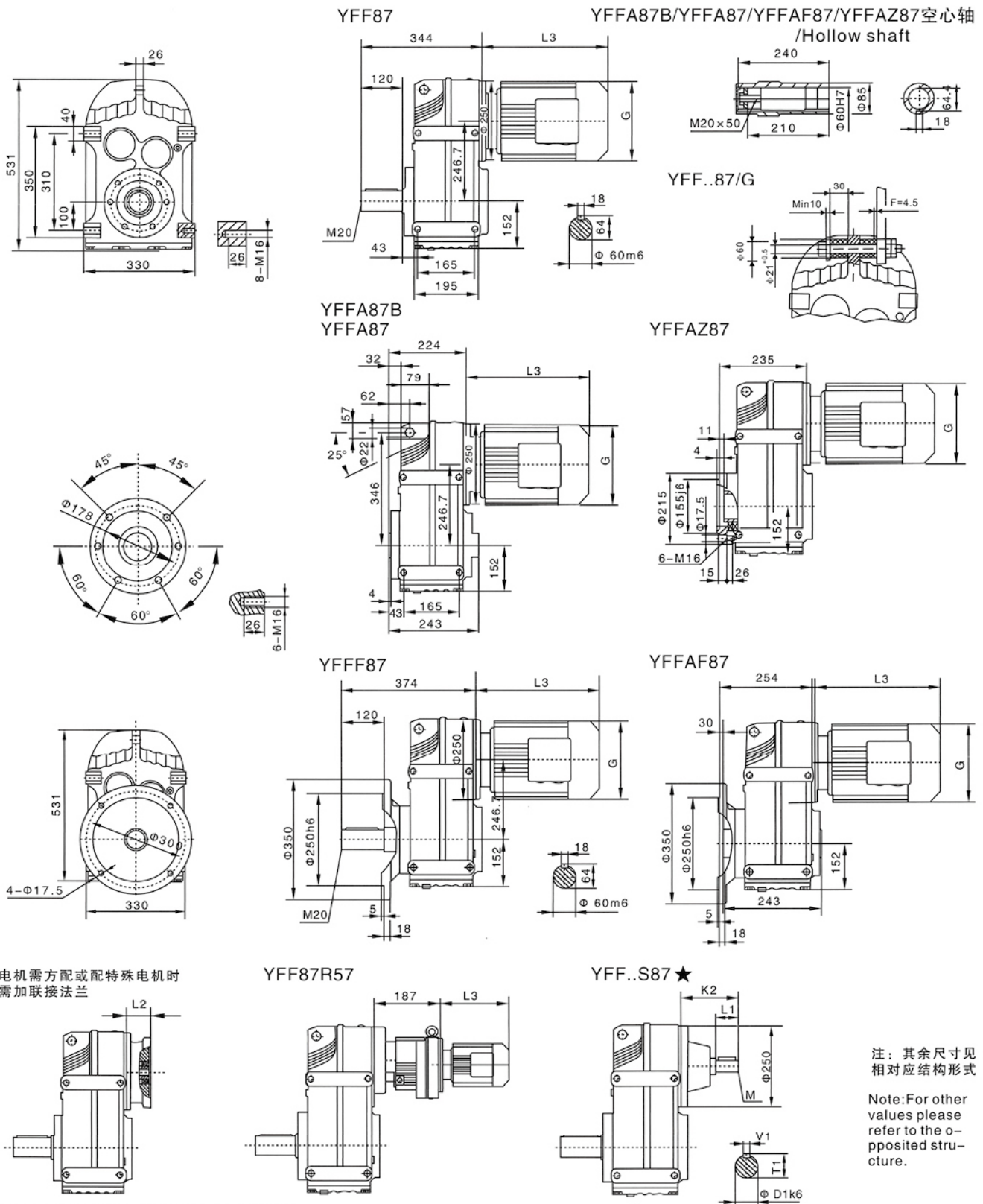
When equipping the user's motor or the special one, the flange is required to be connected.

Y2电机机座号 Motor size	71	80	90S	90L	100	112M	132S	132M	160M		
功率/4P Power/(kW)	0.37	0.55	0.75	1.1	1.5	2.2	3	4	5.5	7.5	11
L3	237	292	297	322	354	391	430	463	555		
G	145	175	195	195	215	240	275	275	330		
L2	84	95	95	95	95	95	117	117	155		

注: 1. 以上壳体为通用件安装尺寸均可相互参照 2. YFF.. " 表示 YFFA、YFFF、YFFAF、YFFAZ

Note: 1. The above housings are common parts. The mounting dimensions may consult each other. 2. YFF.. " mean YFF、YFFA、YFFF、YFFAF、YFFAZ

★查表: 15 Seetable: 15 查表15: i=48-282查AD2 i=28-48查AD3 i=4-28查AD4

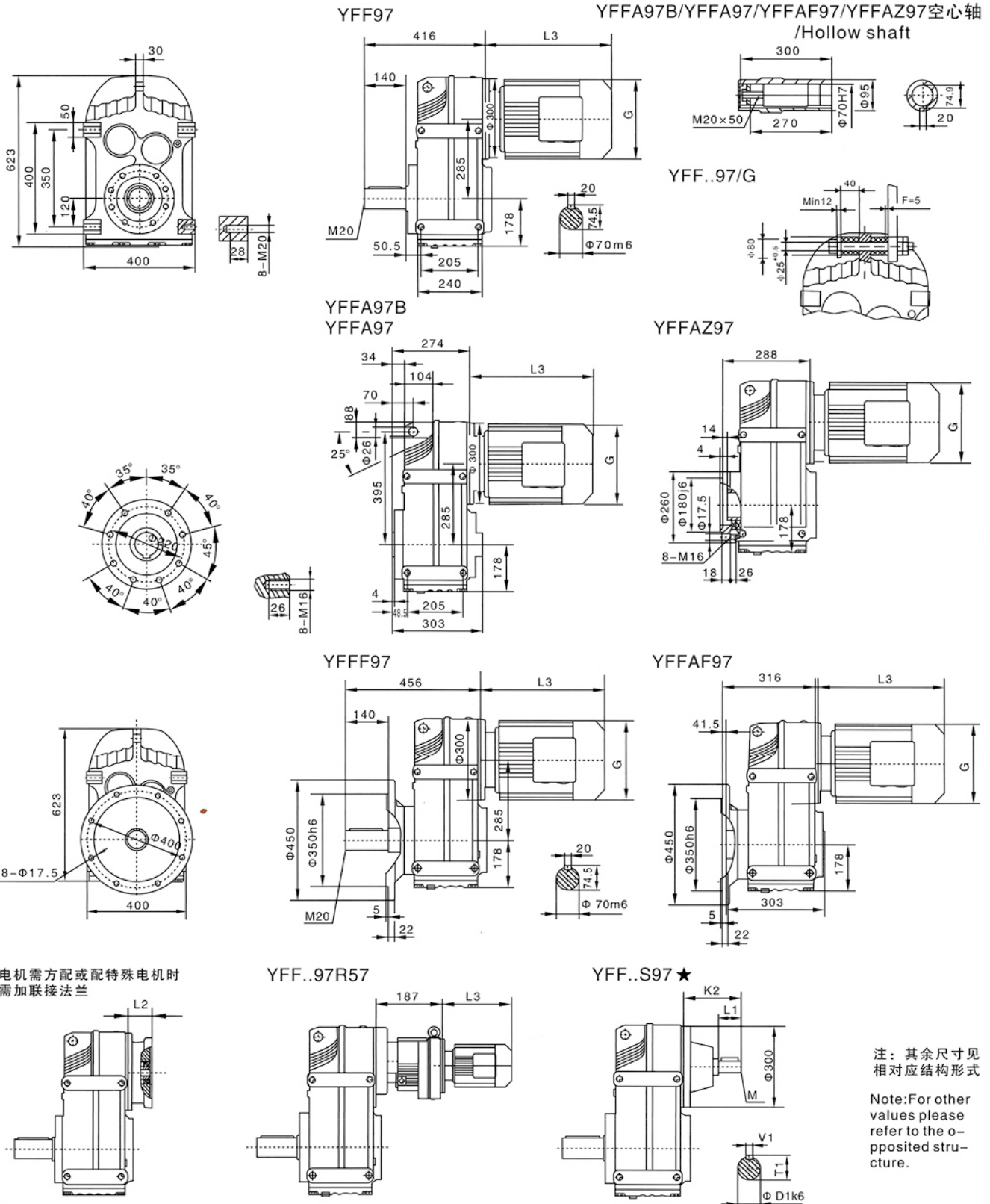


注：其余尺寸见
相对应结构形式
Note: For other
values please
refer to the o-
pposited struc-
ture.

When equipping the user's motor or the special one, the flange is required to be connected.

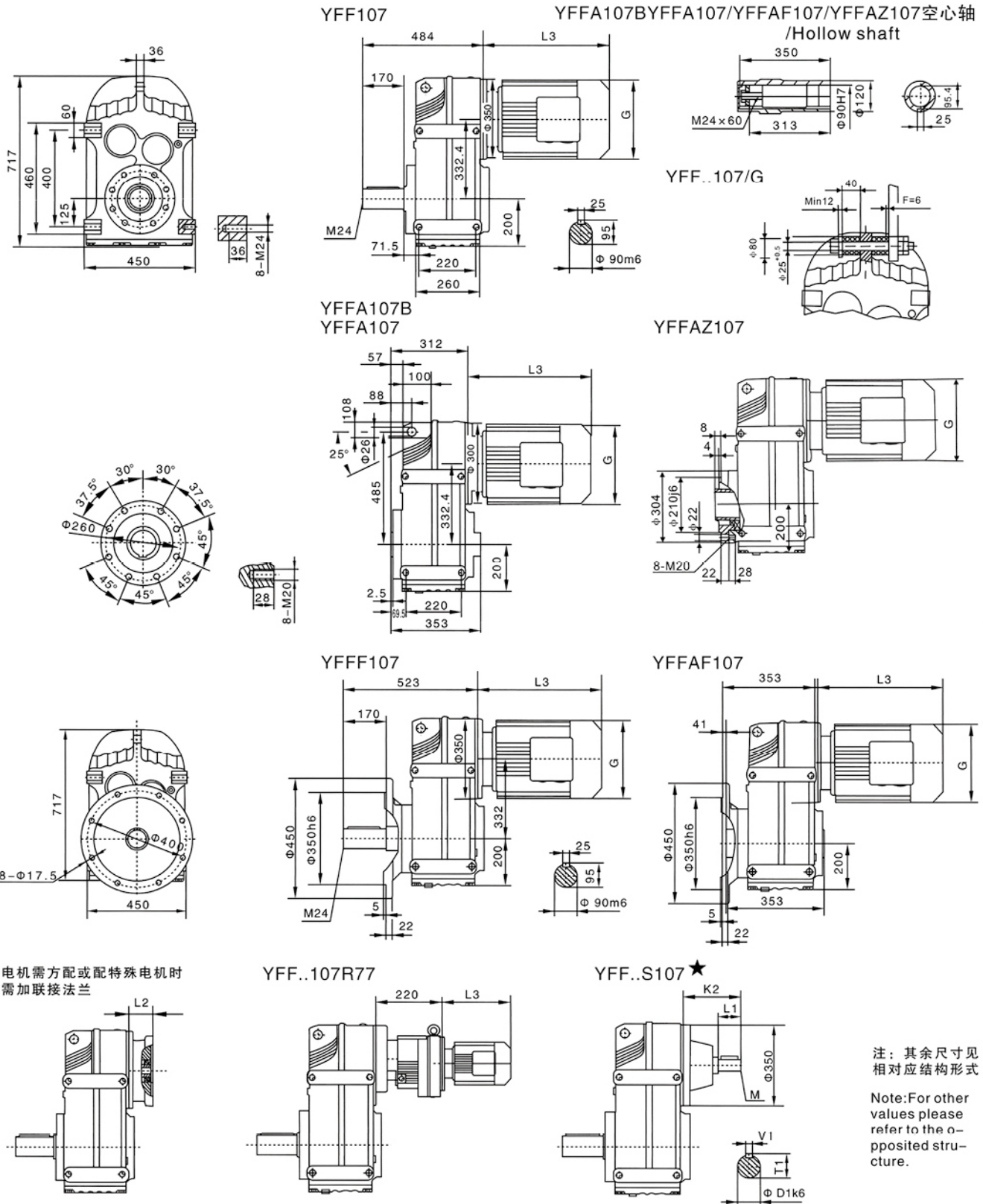
Y2电机机座号 Motor size	80	90S	90L	100	112M	132S	132M	160M	160L	180M	180L
功率/4P Power/(kW)	0.75	1.1	1.5	2.2	3	4	5.5	7.5	11	15	22
L3	261	284	309	351	371	417	450	538	583	612	652
G	175	195	195	215	240	275	275	330	330	380	380
L2	95	95	95	95	95	117	117	155	155	155	155

注: 1. 以上壳体为通用件, 安装尺寸均可相互参照 2. YFF.. * 表示YFFA、YFFF、YFFAF、YFFAZ
 Note: 1. The above housings are common parts. The mounting dimensions may consult each other. 2. YFF.. * mean YFF、YFFA、YFFF、YFFAF、YFFAZ
 * 查表: 15 Seetable: 15 查表15: i=76-271查AD2 i=38-76查AD3 i=28-38查AD4 i=4-28查AD5



Y2电机机座号 Motor size	90S	90L	100	112N	132S	132M	160M	160L	180M	180L	200
功率/4P Power/(kW)	1.1	1.5	2.2 3	4	5.5	7.5	11	15	18.5	22	30
L3	276	301	322	342	411	444	529	574	593	633	670
G	195	195	215	240	275	275	330	330	380	380	420
L2	95	95	95	95	117	117	155	155	155	155	160

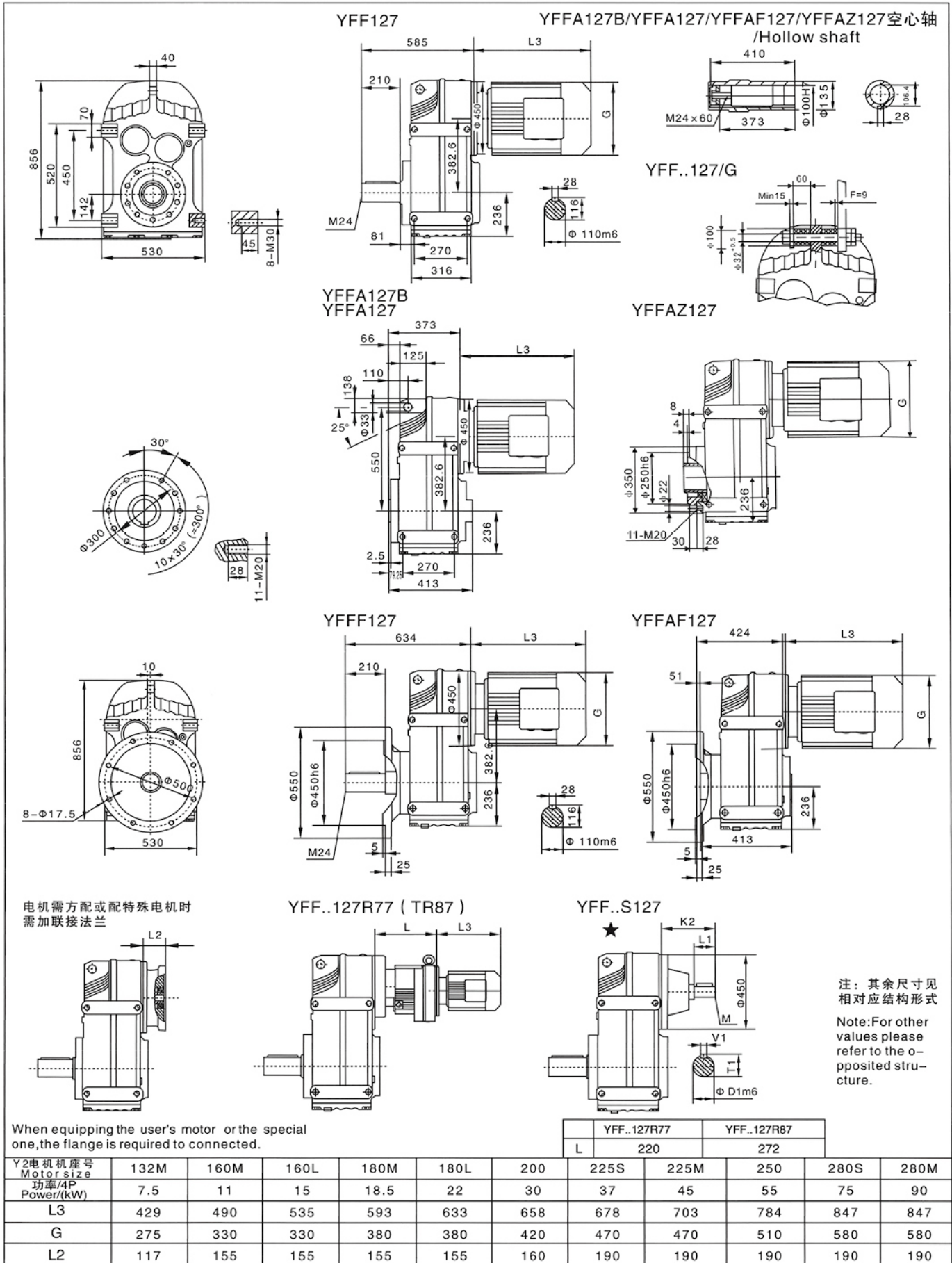
注: 1. 以上壳体为通用件, 安装尺寸均可相互参照 2. YFF.. 表示YFFA、YFFF、YFFAF、YFFAZ
 Note: 1. The above housings are common parts. The mounting dimensions may consult each other. 2. YFF.. mean YFF, YFFA, YFFF, YFFAF, YFFAZ
 ★查表: 15 Seetable: 15查表15: i=70~277查AD3 i=36~70查AD4 i=15~36查AD5 i=4.5~15查AD6



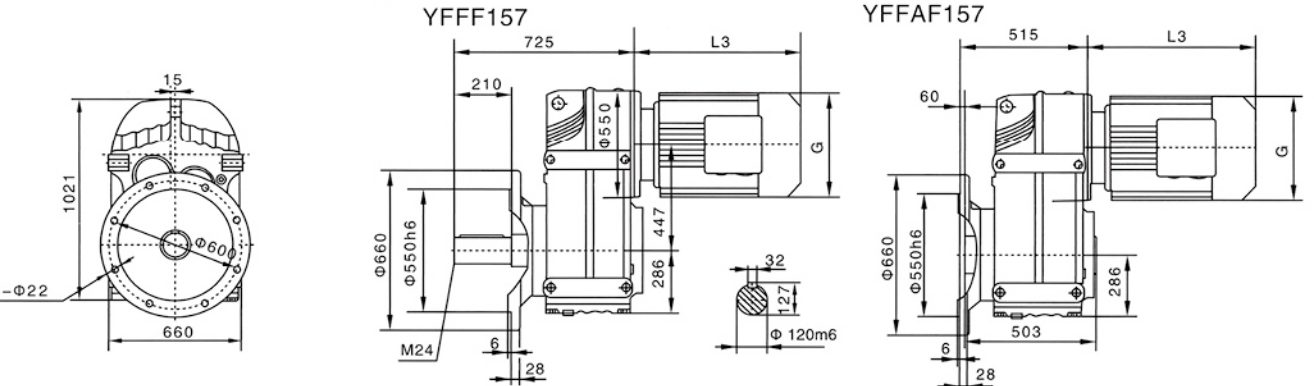
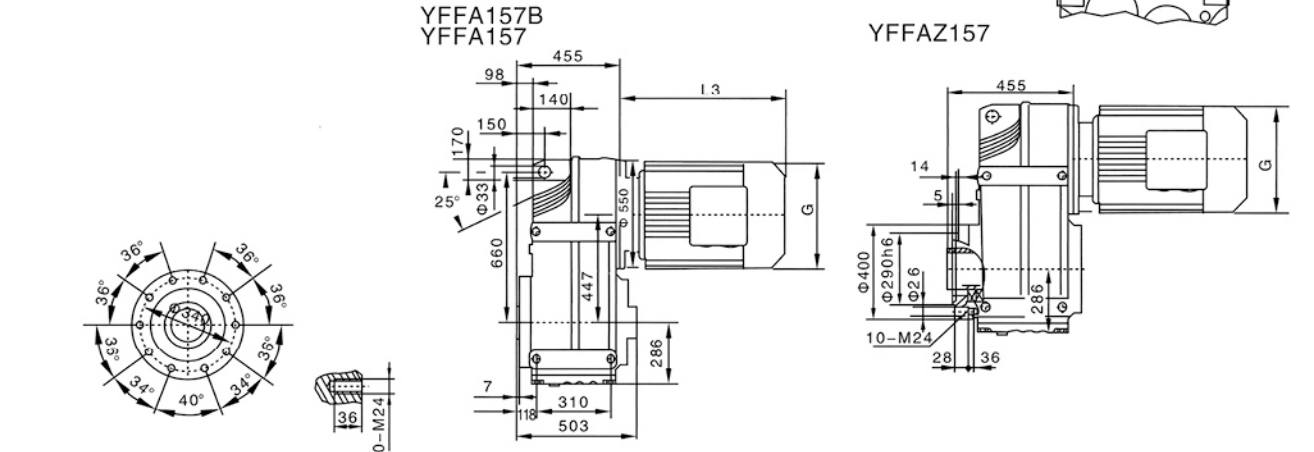
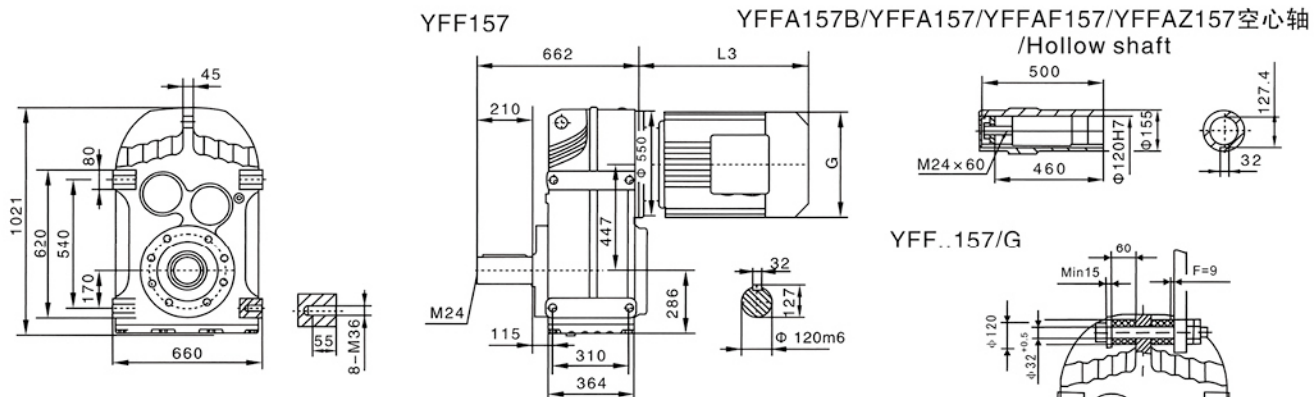
When equipping the user's motor or the special one, the flange is required to be connected.

Y2电机座号 Motor size	100	112M	132S	132M	160M	160L	180M	180L	200	225S	225M
功率/4P Power/(kW)	2.2 3	4	5.5	7.5	11	15	18.5	22	30	37	45
L3	325	342	397	430	518	563	593	633	670	684	709
G	215	240	275	275	330	330	380	380	420	470	470
L2	95	95	117	117	155	155	155	155	160	190	190

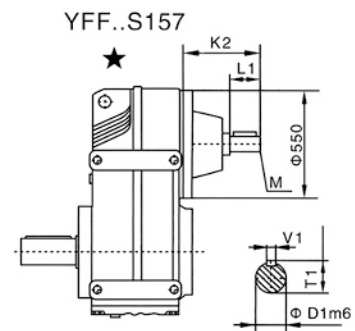
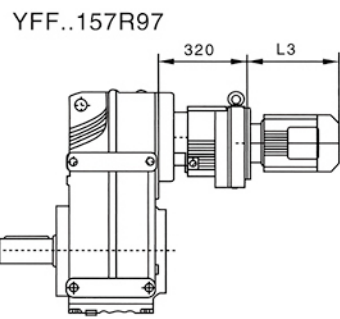
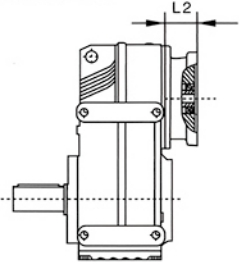
注:1.以上壳体为通用件,安装尺寸均可相互参照 2.YFF..表示YFFA、YFFF、YFFAF、YFFAZ
 Note:1.The above housings are common parts.The mounting dimensions may consult each other. 2.YFF.. mean YFF、YFFA、YFFF、YFFAF、YFFAZ
 ★查表: 15 Seetable:15 查表15: i=115~255查AD3 i=50~115查AD4 i=32~50查AD5 i=6~32查AD6



注: 1. 以上壳体为通用件, 安装尺寸均可相互参照 2. YFF.. 表示 YFFA, YFFF, YFFAF, YFFAZ
Note: 1. The above housings are common parts. The mounting dimensions may consult each other. 2. YFF.. mean YFF, YFFA, YFFF, YFFAF, YFFAZ
★查表: 15 查表15; i=75-172查AD4 i=42-75查AD5 i=32-42查AD6 i=25-32查AD7 i=4-25查AD8



电机需方配或配特殊电机时需加联接法兰



注：其余尺寸见相对应结构形式
Note: For other values please refer to the o-pposited structure.

When equipping the user's motor or the special one, the flange is required to connected.

Y2电机座号 Motor size	160M	160L	180M	180L	200	225S	225M	250	280S	280M	315S	315M	315L
功率/4P Power/(kw)	11	15	18.5	22	30	37	45	55	75	90	110	132	160
L3	492	537	593	633	646	673	698	779	847	847	1100	1180	1270
G	330	330	380	380	420	470	470	510	580	580	645	645	645
L2	155	155	155	155	160	190	190	190	190	190	190	190	190

注：1.以上壳体为通用件，安装尺寸均可相互参照 2. YFF..* 表示YFF, YFFA, YFFF, YFAF, YFFAZ
Note: 1. The above housings are common parts. The mounting dimensions may consult each other. 2. "YFF" mean YFF, YFFA, YFFF, YFAF, YFFAZ
★查表：15 Seetable: 15查表15: i=53-268查AD5 i=35-53查AD6 i=29-35查AD7 i=10-29查AD8